



SEWING HEAD

DS-9

袋口縫ミシン

取扱
説明書
INSTRUCTION
MANUAL
部品表
PARTS LIST

MODEL

DS-9A
DS-9C
DS-9P
DS-9AW
DS-9CW



MODEL

DS-9A
DS-9C
DS-9P
DS-9AW
DS-9CW



ニューロング工業株式会社

〒125-0063 東京都葛飾区白鳥 4-8-14
営業本部 TEL 03(3603)2284代 FAX 03(3603)2253

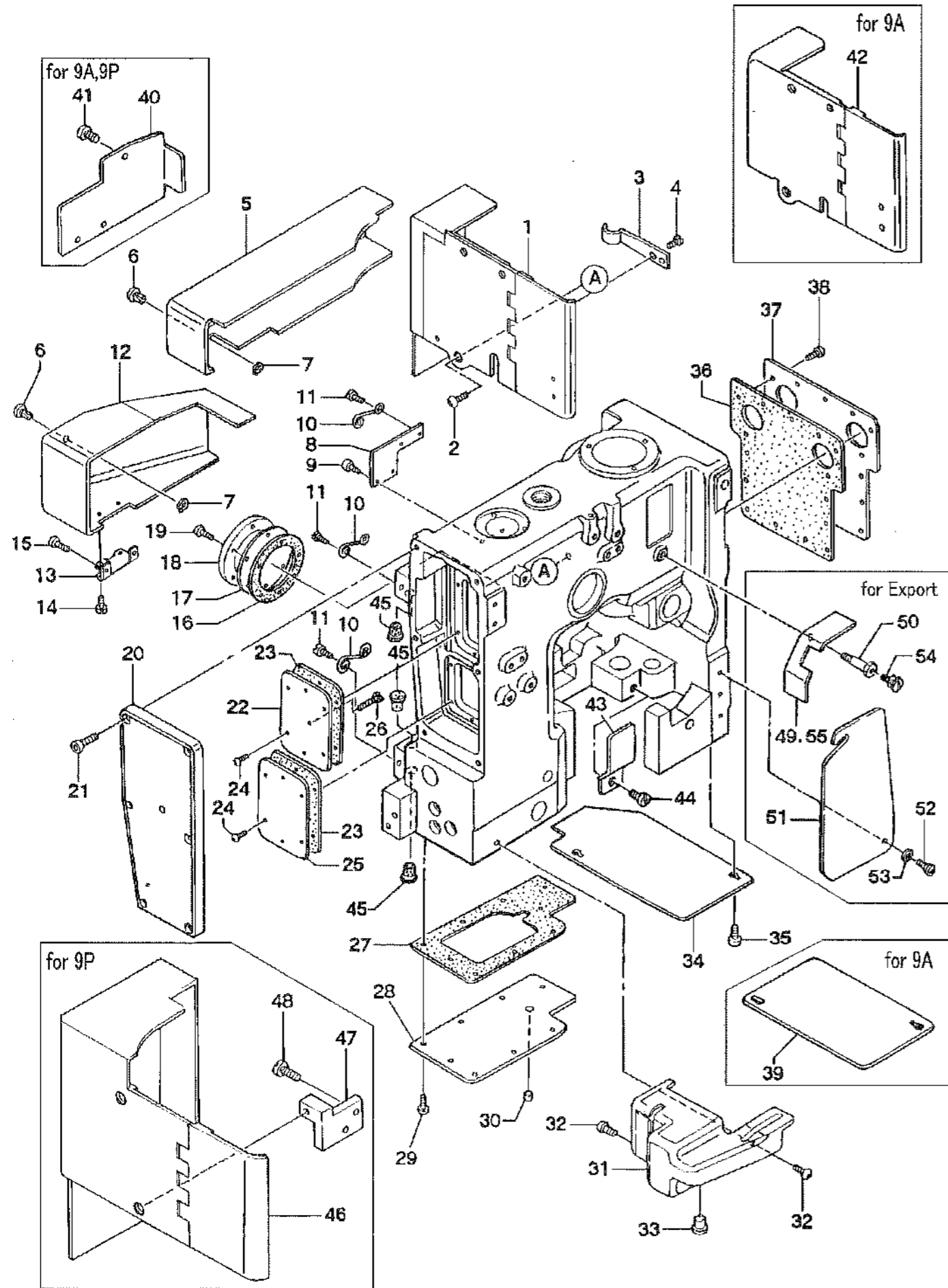
NL工業グループホームページ URL/E-mail

URL <http://NLwww.com/>
E-mail info@nlwww.com

ニューロング工業株式会社

01. MISCELLANEOUS COVERS PARTS

カバー関係



01. MISCELLANEOUS COVERS PARTS

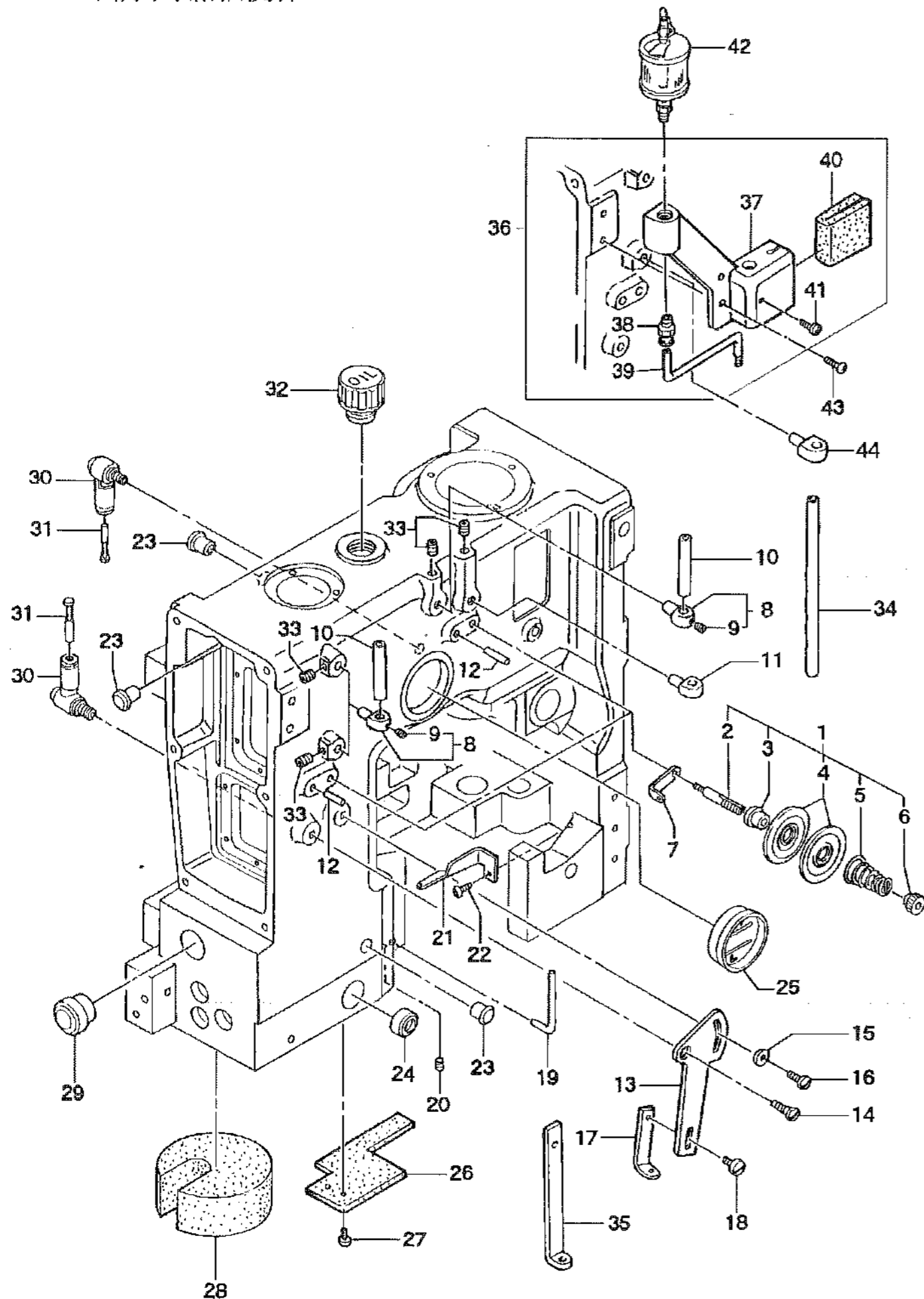
カバー関係

図番 Ref.No.	部品番号 Part No.	部品名称 Description	個数 Q'ty					摘要 Remarks
			A	C	P			
1	105017B	Cloth Plate		1	-	-	1	
2	7/32S32007	Screw for 105017B	2	2	2	2	2	
3	065044	Cloth Plate Spring	1	1	1	1	1	
4	11/64S40005	Screw for 065044	2	2	2	2	2	
5	305031	Cylinder Cover	1	1	1	1	1	
6	E07002	Fastener Head(T8-149)	2	3	2	2	3	
7	1RS-8	Stop Ring(S-8)	2	3	2	2	3	
8	305122	Fastener Spring Base	1	1	1	1	1	
9	4B5×10	Screw for 305122	2	2	2	2	2	
10	E07003	Fastener Spring(ST8)	2	3	2	2	3	
11	9/64S40004	Screw for E07003	4	6	4	4	6	
12	305021	Cutter Cover	-	1	-	-	1	
13	E07001	Hinge(2FZ-11)	-	1	-	-	1	
14	9/64S40004	Screw for E07001	-	2	-	-	2	
15	11/64S40005	Screw for E07001	-	2	-	-	2	
16	305141	Gasket	1	1	1	1	1	
17	035191	Side Cover	1	1	1	1	1	
18	035201	Side Cover Retainer	1	1	1	1	1	
19	10S4×12K	Screw for 035201,035191,305141	6	6	6	6	6	
20	305012	Body Head Cover	1	1	1	1	1	
21	4B5×20	Screw for 305012	6	6	6	6	6	
22	305081	Top Cover A	1	1	1	1	1	
23	305091	Gasket	2	2	2	2	2	
24	10S4×12K	Screw for 305081,305082,305091	12	12	12	12	12	
25	305082	Top Cover B	1	1	1	1	1	
26	SC63278	Screw	1	1	1	1	1	
27	305052	Gasket	1	1	1	1	1	
28	305042	Face Plate, upper	1	1	1	1	1	
29	3S5×12	Screw for 305042,304052	9	9	9	9	9	
30	11G1/8NPT	Plug	1	1	1	1	1	
31	305111	Needle Bar Cover	1	1	1	1	1	
32	3S5×10	Screw for 305111	3	3	3	3	3	
33	065401	Rubber Bushing	1	1	1	1	1	
34	305151	Face Plate, lower	-	1	1	-	1	
35	3S4×8	Screw for 305151	2	2	2	2	2	
36	305072	Gasket	1	1	1	1	1	
37	305062	Inside Cover	1	1	1	1	1	
38	3S5×15	Screw for 305062,305072	15	15	15	15	15	
39	305152	Face Plate, lower	1	-	-	1	-	
40	305271	Side Cover	1	-	1	1	-	
41	11/64S40005	Screw	3	-	3	3	-	
42	305281	Cloth Plate	1	-	-	1	-	
43	305261	Looper Thread Cover	1	1	1	1	1	
44	11/64S40005	Screw for 305261	1	1	1	1	1	
45	255351	Rubber Bushing	3	-	3	3	-	
46	305211	Cloth Plate	-	-	1	-	-	
47	305201	Cloth Plate Base	-	-	1	-	-	
48	3/16S28018	Screw for 305201	-	-	2	-	-	
49	305241	Looper Thread Take-Up Cover B	(1)	(1)	(1)	-	-	
50	305171	Post	(1)	(1)	(1)	(1)	(1)	
51	305162	Looper Thread Take-Up Cover A	(1)	(1)	(1)	(1)	(1)	
52	15/64S28017	Screw for 305162	(1)	(1)	(1)	(1)	(1)	
53	5/16W05201	Washer for 305162	(1)	(1)	(1)	(1)	(1)	
54	3/16S32004	Screw for 305162	(1)	(1)	(1)	(1)	(1)	
55	305242	Looper Thread Take-Up Cover B	-	-	-	(1)	(1)	

For Export
海外仕様

02-1. THREAD TENSION & OILING PARTS

糸調子、給油関係



02-1. THREAD TENSION & OILING PARTS

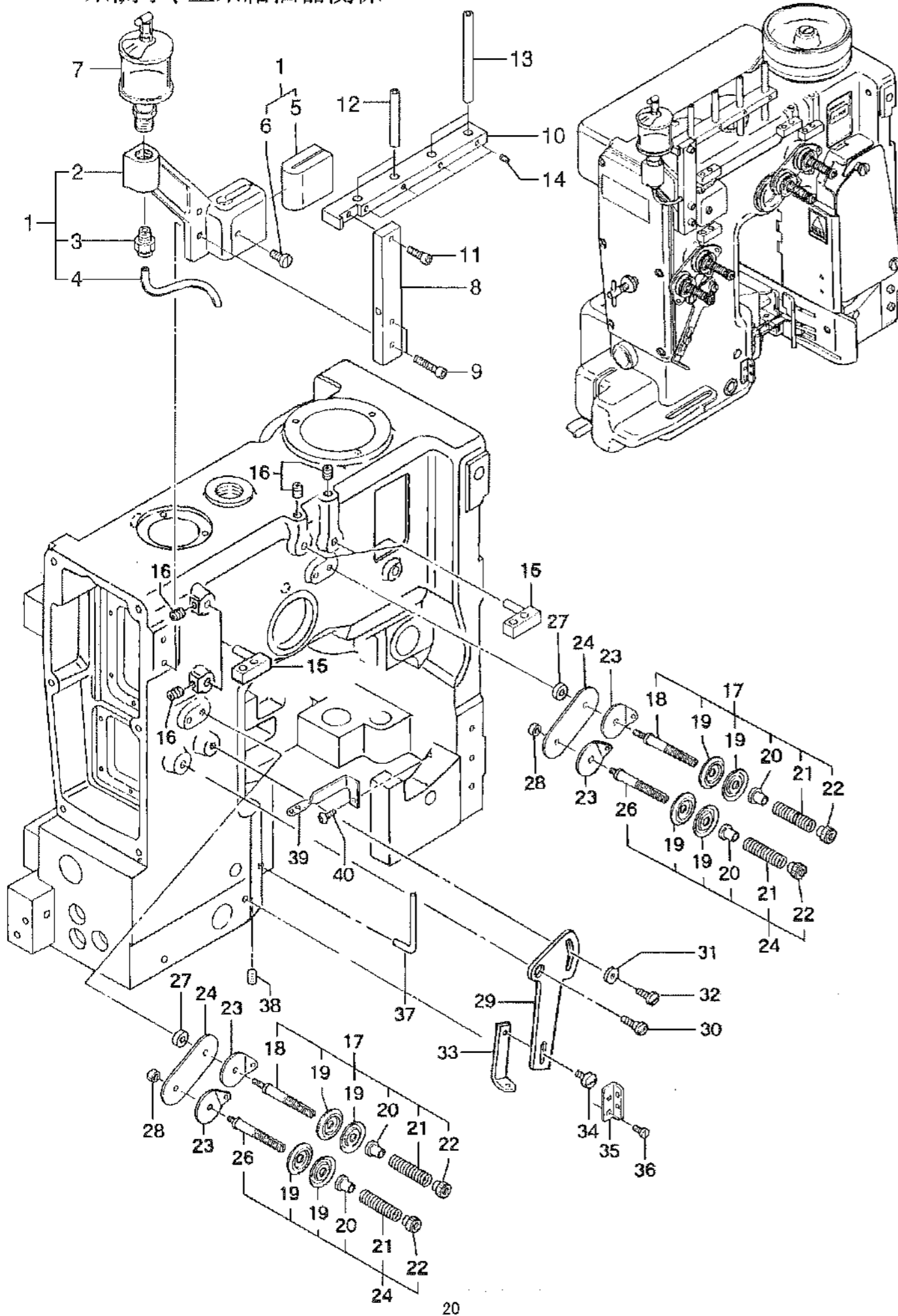
糸調子、給油関係

AW CW

図番 Ref.No.	部品番号 Part No.	部品名称 Description	個数 Q'ty					摘要 Remarks	
			A	C	P				
1	065151E	Thread Tension Ass'y	糸調子組	2	2	2	-	-	(2-6)
2	065151	Tension Post	糸調子芯棒	2	2	2	-	-	
3	HA1348	Tension Post Ferrule	糸調子スリーブ	2	2	2	-	-	
4	80676A	Tension Disc	糸調子皿	4	4	4	-	-	
5	065181	Tension Spring	糸調子スプリング	2	2	2	-	-	
6	065171	Tension Nut	糸調子ナット	2	2	2	-	-	
7	245071	Thread Guide	糸ガイド	2	2	2	-	-	
8	075081	Frame Thread Eyelet Support	糸ガイド	3	3	3	-	-	(9)
9	11/64S40501	Screw for 075091	ネジ	3	3	3	-	-	
10	075091	Frame Thread Eyelet	糸ガイドパイプ	3	3	1	-	-	
11	065211	Frame Thread Eyelet	糸ガイド	1	1	1	-	-	
12	80667	Tension Disc Stop Pin	糸調子皿止め	2	2	2	-	-	
13	035031	Needle Thread Controller A	上糸調節A	1	1	1	-	-	
14	11/64S40014	Screw for 035031	ネジ	1	1	1	-	-	
15	11/64W15103	Washer for 035031	ワッシャー	1	1	1	-	-	
16	11/64S40009	Screw for 035031	ネジ	1	1	1	-	-	
17	035042	Needle Thread Controller B	上糸調節B	1	1	1	-	-	
18	9/64S40011	Screw for 035042	ネジ	1	1	1	-	-	
19	305131	Needle Thread Guide	上糸掛ケ	1	1	1	-	-	
20	1S5×5	Screw for 305131	ネジ	1	1	1	-	-	
21	255262	Looper Thread Guide	下糸ガイド	1	1	1	-	-	
22	3S4×10	Screw for 255262	ネジ	1	1	1	-	-	
23	065401	Rubber Bushing	キャップ	3	3	3	3	3	
24	D05003	Oil Gauge (OLG-207R)	オイルゲージ	1	1	1	1	1	
25	D05007	Oil Gauge (KDM-40)	オイルゲージ	1	1	1	1	1	
26	305231	Felt	給油綿	1	1	1	1	1	
27	4S4×8	Screw for 305231	ネジ	2	2	2	2	2	
28	035821	Fence	フェンス	1	1	1	1	1	
29	D09002	Rubber Bushing (EZ3020AO)	給油口蓋	1	1	1	1	1	
30	D07055	Tube Fitting, elbow (POL8-02)	ユニバーサルエルボ	2	2	2	2	2	
31	D07056	Tube Fitting, plug (PP8)	プラグ	2	2	2	2	2	
32	D09005	Plug (BM-3/4)	給油口蓋	1	1	1	1	1	
33	1S5×6	Screw	ネジ	4	4	4	-	-	Single Thread (単環用)
34	305291	Frame Thread Eyelet	糸ガイドパイプ	-	-	2	-	-	
35	305251	Needle Thread Controller	上糸調節	(1)	(1)	(1)	-	-	
36	255392A	Needle Thread Oiler Ass'y	上糸給油器組	(1)	(1)	(1)	-	-	(37-41)
37	255392	Needle Thread Oiler Base	上糸給油器土台	(1)	(1)	(1)	-	-	
38	D07057	Tube Fitting, straight (PC4-01M)	ワンタッチ継手	(1)	(1)	(1)	-	-	Special Order 特注
39	8FU2-4×130	Oil Tube	給油パイプ	(1)	(1)	(1)	-	-	
40	105521	Felt	給油綿	(1)	(1)	(1)	-	-	
41	9/64S40005	Screw	ネジ	(1)	(1)	(1)	-	-	
42	D03002	Oiler (38-1/4PF)	オイラー	(1)	(1)	(1)	-	-	
43	3S5×15	Screw for 255392	ネジ	(2)	(2)	(2)	-	-	
44	065211	Frame Thread Eyelet	糸ガイド	(1)	(1)	(1)	-	-	

02-2. THREAD TENSION & NEEDLE THREAD OILER (DS-9AW,DS-9CW)

糸調子、上糸給油器関係

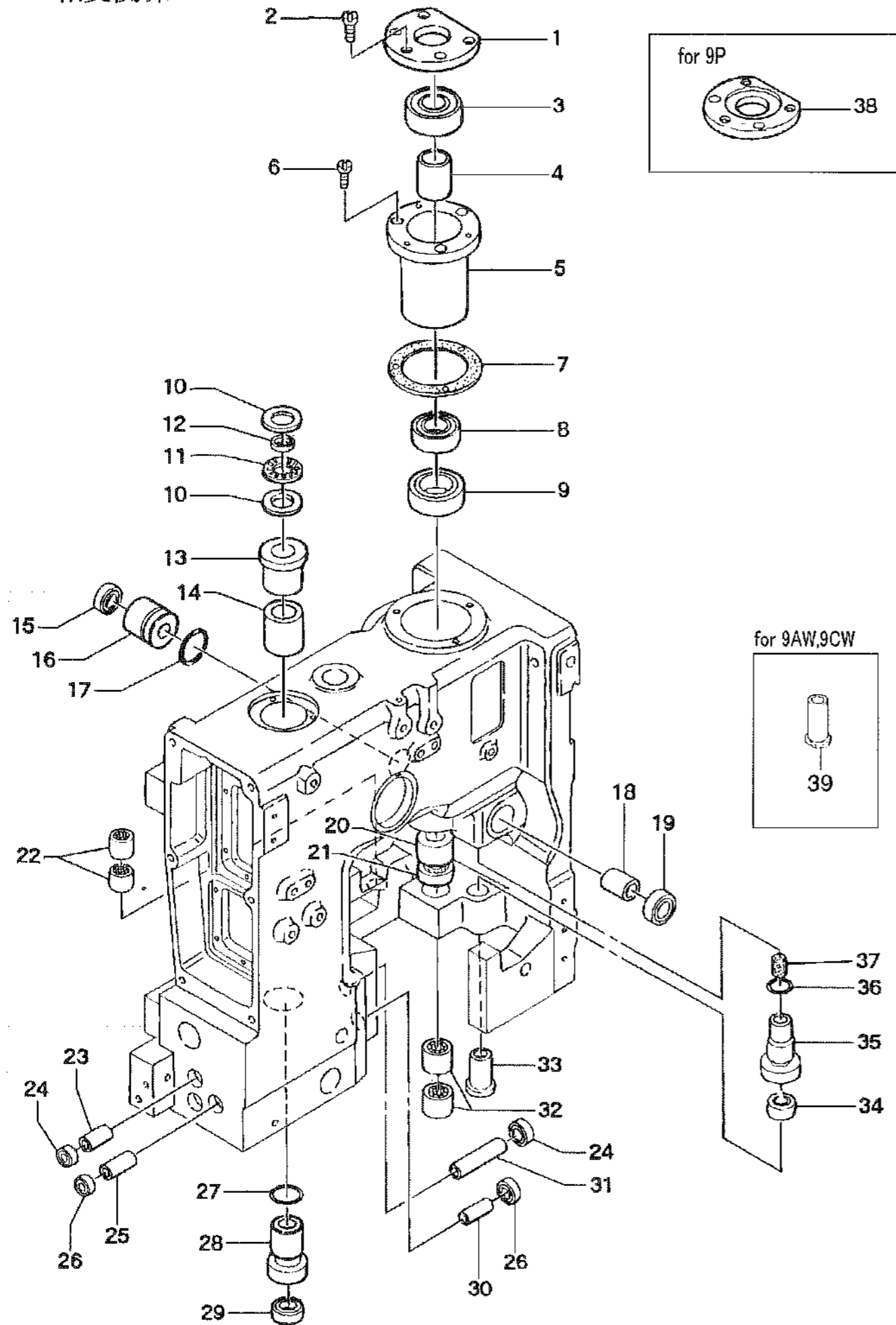


02-2. THREAD TENSION & NEEDLE THREAD OILER (DS-9AW,DS-9CW)

糸調子、上糸給油器関係

図番 Ref.No.	部品番号 Part No.	部品名称 Description	個数 Q'ty		摘要 Remarks
			9AW	9CW	
1	305401A	Needle Thread Oiler Ass'y	1	1	(2-6)
2	305401	Needle Thread Oiler	1	1	
3	D07057	Tube Fitting, straight(PC4-01M)	1	1	
4	8FU2-4×130	Oile Tube	1	1	
5	105521	Felt	1	1	
6	9/64S40005	Screw	1	1	
7	D03002	Oile(38-1/4PF)	1	1	
8	305371	Thread Guide Holder Base	1	1	
9	4B5×25	Screw	2	2	
10	305361	Thread Guide Holder	1	1	
11	4B5×15	Screw	1	1	
12	075091	Frame Thread Eyelet	2	2	
13	305441	Frame Thread Eyelet	2	2	
14	1S5×5	Screw for 075091,305441	4	4	
15	105561	Thread Eyelet	4	4	
16	1S5×5	Screw for 105561	4	4	
17	035021A	Thread Tension Ass'y	2	2	(18-22)
18	035021	Tension Post	2	2	
19	065261	Tension Disc	8	8	
20	035071	Tension Post Ferrule	4	4	
21	035061	Tension Spring	4	4	
22	065171	Tension Nut	4	4	
23	015011	Tension Thread Guide	4	4	
24	035011	Tension Thread Guide	2	2	
25	035022A	Thread Tension Ass'y	2	2	(19-22,26)
26	035022	Tension Post	2	2	
27	305431	Collar	1	1	
28	11/64N40104	Nut	2	2	
29	035031	Needle Thread Controller A	1	1	
30	11/64S40014	Screw for 035031	1	1	
31	11/64W15103	Washer for 035031	1	1	
32	11/64S40009	Screw for 035031	1	1	
33	035043	Needle Thread Controller B	1	1	
34	9/64S40011	Screw for 035043	1	1	
35	305381	Needle Thread Guide	1	1	
36	11/64S40005	Screw for 305381	1	1	
37	305131	Needle Thread Guide	1	1	
38	1S5×5	Screw for 305131	1	1	
39	305391	Looper Thread Guide	1	1	
40	3S4×10	Screw for 305391	1	1	

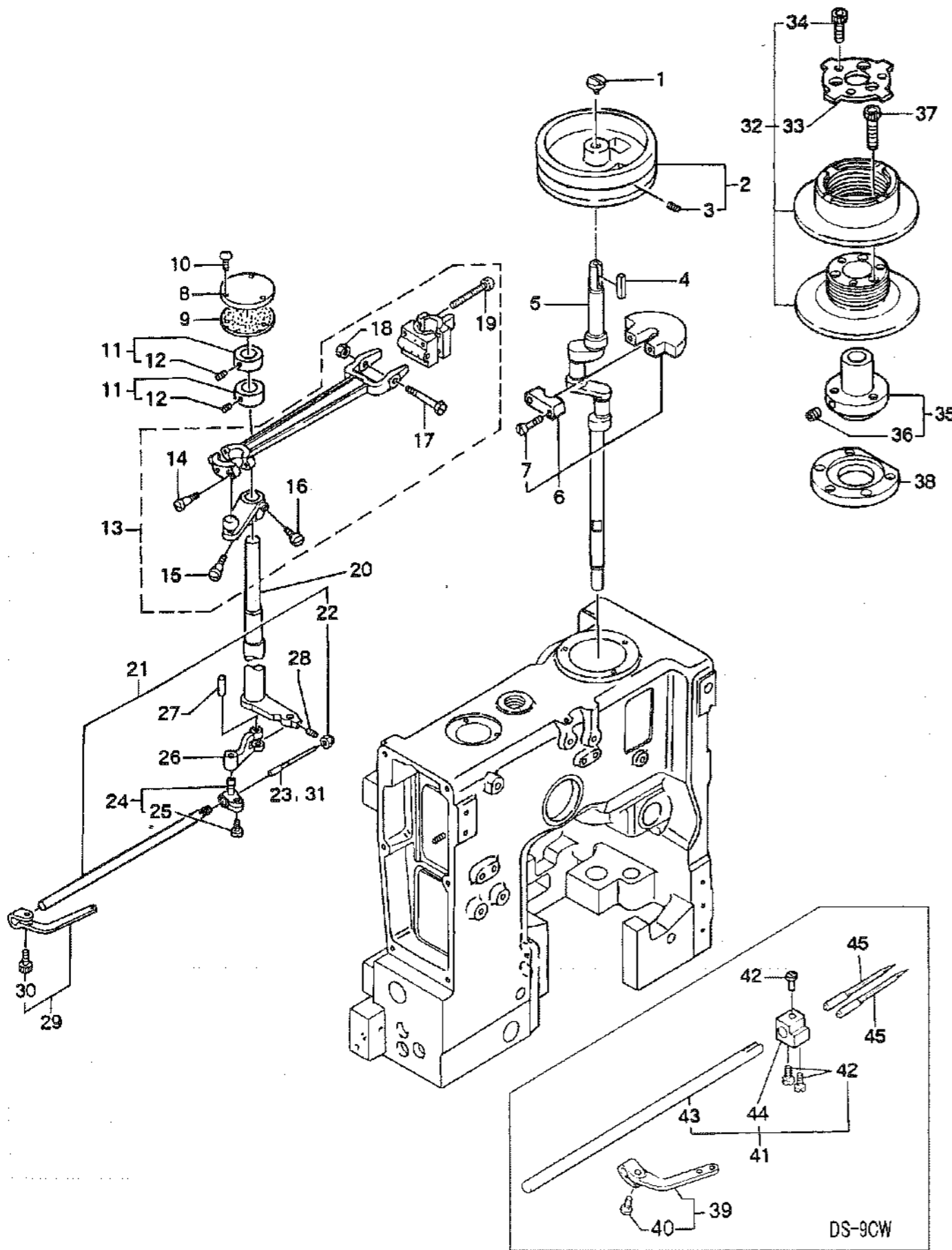
03. BUSHING PARTS
軸受関係



03. BUSHING PARTS
軸受関係

図番 Ref.No.	部品番号 Part No.	部品名称 Description	個数 Q'ty				摘要 Remarks	
			A	C	P			
1	031091	Bearing Holder	1	1	-	1	1	
2	3/16S28014	Screw for 031091	3	3	3	3	3	
3	1A01002	Ball Bearing (6302ZZ)	1	1	1	1	1	
4	031111	Collar A	1	1	1	1	1	
5	031082	Crank Shaft Bushing Housing	1	1	1	1	1	
6	3/16S28005	Screw for 031082	3	3	3	3	3	
7	301041	Gasket	1	1	1	1	1	
8	1A01004	Ball Bearing (6202ZZ)	1	1	1	1	1	
9	D04003	Oil Seal (SC224211)	1	1	1	1	1	
10	4A01002	Thrust Washer (FTRA-1528)	2	2	2	2	2	
11	4A01001	Thrust Bearing (FTNA-1528)	1	1	1	1	1	
12	302061	Ring, pilot	1	1	1	1	1	
13	302052	Arm Rocker Shaft Bushing, rear	1	1	1	1	1	
14	302041	Arm Rocker Shaft Bushing, middle	1	1	1	1	1	
15	D04011	Oil Seal (TC10207)	1	1	1	1	1	
16	303041	Looper Drive Lever Shaft Bushing, rear	1	1	1	1	1	
17	31LP21	"O" Ring (P21)	1	1	1	1	1	
18	303031	Looper Drive Lever Shaft Bushing, front	1	1	1	1	1	
19	D04012	Oil Seal (TC12257)	1	1	1	1	1	
20	301031	Crank Shaft Bushing, middle	1	1	1	1	1	
21	D04013	Oil Seal (TC15307)	1	1	1	1	1	
22	3A03016	Needle Bearing (HMK1012L)	4	4	4	4	4	
23	112061	Presser Bar Bushing, upper	2	2	2	2	2	
24	D04016	Oil Seal (TC4 8.7 16.5 7)	4	4	4	4	4	
25	092052	Needle Bar Bushing, upper	1	1	1	1	1	
26	D04015	Oil Seal (TC4 8 16.5 7)	2	2	2	2	2	
27	31LP21	"O" Ring (P21)	1	1	1	1	1	
28	302032	Arm Rocker Shaft Bushing, front	1	1	1	1	1	
29	D04014	Oil Seal (SC15257)	1	1	1	1	1	
30	092062	Needle Bar Bushing, lower	1	1	1	1	1	
31	062201	Presser Bar Bushing, lower	2	2	2	2	2	
32	3A03014	Needle Bearing (HMK1516LL)	1	1	1	1	1	
33	303111	Looper Rocker Shaft Bushing, front	1	1	1	-	-	
34	D04011	Oil Seal (TC10207)	1	1	1	1	1	
35	303121	Looper Rocker Shaft Bushing, rear	1	1	1	1	1	
36	32LS14	"O" Ring (S14)	1	1	1	1	1	
37	707181	Filter	1	1	1	1	1	
38	301091	Bearing Holder	(1)	(1)	1	(1)	(1)	
39	303112	Looper Rocker Shaft Bushing, front	-	-	-	1	1	

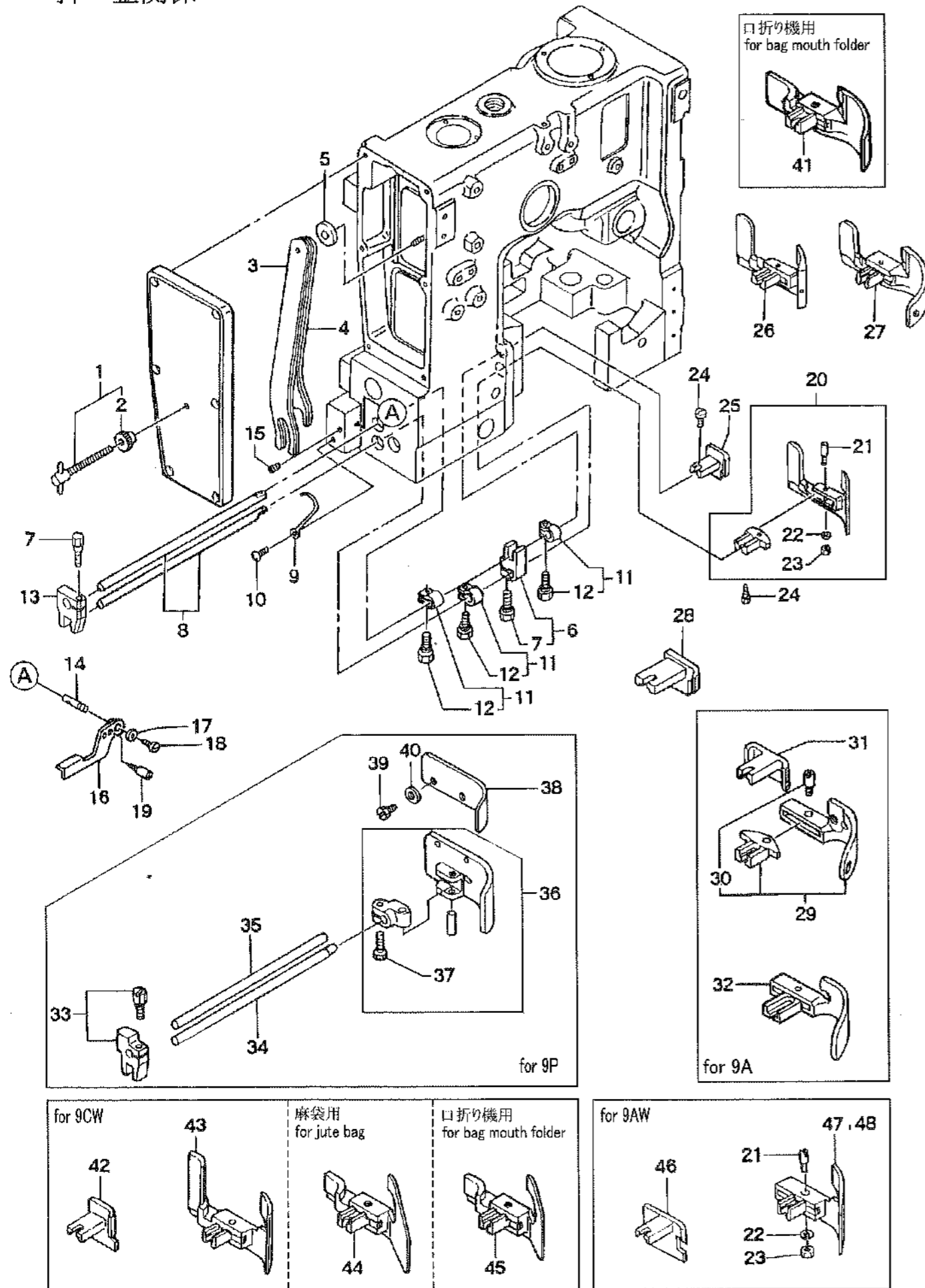
04. NEEDLE BAR & CRANK SHAFT PARTS
針棒、クランクシャフト関係



04. NEEDLE BAR & CRANK SHAFT PARTS
針棒、クランクシャフト関係

図番 Ref.No.	部品番号 Part No.	部品名称 Description	個数 Q'ty					摘要 Remarks
			A	C	P			
1	15/64S28012	Screw for 101101	1	1	1	1	1	
2	301051	Pulley	1	1	-	1	1	(3)
3	1S6×10	Screw for 101101	2	2	-	2	2	
4	1K4×35S	Key (4×4×35)	1	1	1	1	1	
5	301021	Crank Shaft	1	1	1	1	1	
6	031131	Balance Weight	1	1	1	1	1	(7)
7	3/16S28018	Screw for 031131	2	2	2	2	2	
8	302072	Rear Cover	1	1	1	1	1	
9	302082	Gasket	1	1	1	1	1	
10	3S5×15	Screw for 302072,302082	3	3	3	3	3	
11	062052	Arm Rocker Shaft Collar	2	2	2	2	2	(12)
12	15/64S28525	Screw for 062052	4	4	4	4	4	
13	032012A	Crank Shaft Connecting Rod Ass'y	1	1	1	1	1	(14-19)
14	11/64S40090	Screw	2	2	2	2	2	
15	9/32S28015	Spot Screw for 032012A	1	1	1	1	1	
16	9/32S28001	Screw for 032012A	1	1	1	1	1	
17	1/4S40010	Screw	1	1	1	1	1	
18	1/4N40207	Nut	1	1	1	1	1	
19	4B4×20	Screw	4	4	4	4	4	
20	302011	Arm Rocker Shaft	1	1	1	1	1	
21	302091A	Needle Bar Ass'y	1	1	1	-	-	(22)
22	062151	Needle Clamp Nut	1	1	1	-	-	
23	B20001	Needle (DR-H30#26)	1	1	-	-	-	
24	032171	Needle Bar Connecting Stud	1	1	1	1	1	(25)
25	11/64S40002	Screw for 032171	1	1	1	1	1	
26	302021	Needle Bar Connecting Link	1	1	1	1	1	
27	032141	Needle Bar Connecting Link Pin	1	1	1	1	1	
28	1S5×6	Screw for 032141	1	1	1	1	1	
29	302101	Needle Thread Take-Up	1	1	1	-	-	(30)
30	4B5×10	Screw for 302101	1	1	1	-	-	
31	B05001	Needle (DR-G67#27)	-	-	1	-	-	
32	301061A	Variable Diameter Pulley Ass'y	(1)	(1)	1	(1)	(1)	(33,34)
33	301081	Presser Plate	(1)	(1)	1	(1)	(1)	
34	4B5×20	Screw	(3)	(3)	3	(3)	(3)	
35	281122	Pulley Hub	(1)	(1)	1	(1)	(1)	(36)
36	SS142838	Screw	(2)	(2)	2	(2)	(2)	Special Order
37	SC10321	Screw	(3)	(3)	3	(3)	(3)	DS-9A,DS-9C
38	301091	Bearing I-holder	(1)	(1)	1	(1)	(1)	特注
39	302271	Needle Thread Take-Up	-	-	-	1	1	(40)
40	4B5×10	Screw	-	-	-	1	1	
41	302251A	Needle Bar Ass'y	-	-	-	1	1	(42-44)
42	11/64S40001	Screw	-	-	-	3	3	
43	302251	Needle Bar	-	-	-	1	1	
44	302261	Needle Holder	-	-	-	1	1	
45	B20001	Needle (DR-H30#26)	-	-	-	2	2	

05. PRESSER FOOT PARTS
押エ金関係

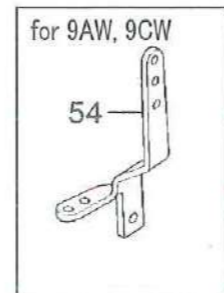
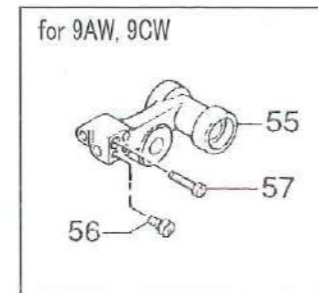
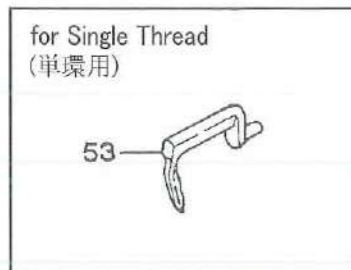
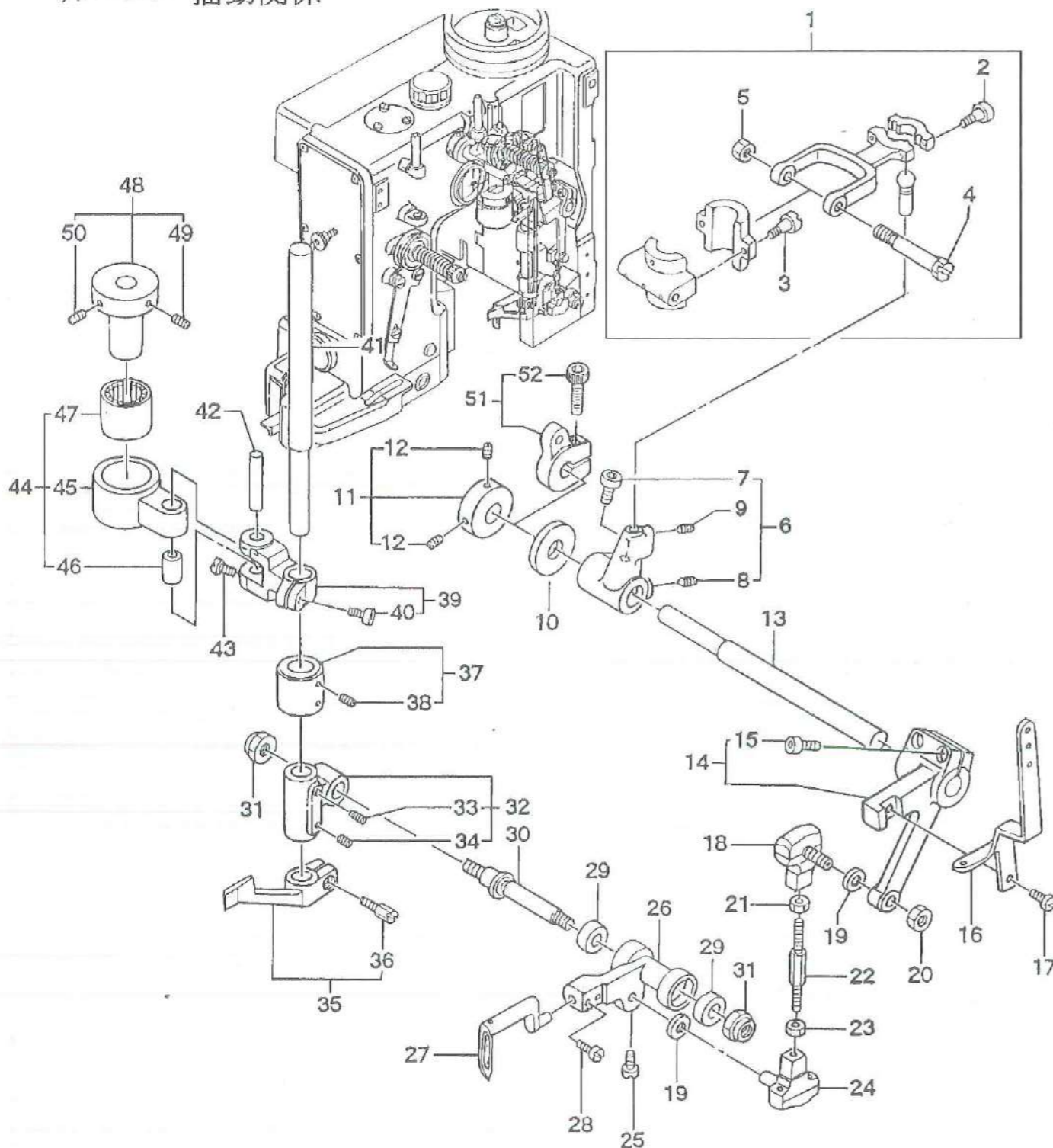


05. PRESSER FOOT PARTS
押エ金関係

図番 Ref.No.	部品番号 Part No.	部品名称 Description	個数 Q'ty					摘要 Remarks
			A	C	P			
1	102171	Presser Spring Regulator Screw	板バネ調節ネジ	1	1	1	1	(2)
2	5/16N24301	Nut for 102171	ナット	1	1	1	1	
3	102091	Presser Bar Spring, large	板バネ (大)	2	2	3	2	
4	102101	Presser Bar Spring, small	板バネ (小)	2	2	-	2	
5	302121	Collar	間座	1	1	1	1	
6	102062	Presser Bar Lifting Bracket, left	押エ棒抱キ (左)	1	1	1	1	(7)
7	15/64S28019	Screw for 102062	ネジ	2	2	2	2	
8	062181	Presser Bar	押エ棒	2	2	-	2	
9	305181	Spring	スプリング	1	1	1	1	
10	3S4×10	Screw for 305181	ネジ	1	1	1	1	
11	072121	Presser Bar Spring Adjuster	押エ棒スプリング調節	3	3	3	3	(12)
12	15/64S28019	Screw for 072121	ネジ	3	3	3	3	
13	302222	Presser Bar Lifting Bracket	押エ棒抱キ上	1	1	-	1	(7)
14	282121	Presser Bar Lifter Hinge Stud	押エ揚ゲピン	1	1	1	1	
15	1S5×10	Screw for 282121	ネジ	1	1	1	1	
16	282242	Presser Bar Lifter	押エ揚ゲ	1	1	-	1	
17	7/32W05201	Washer for 282241	ワッシャー	1	1	1	1	
18	9/64S40011	Screw for 282241	ネジ	1	1	1	1	
19	11/64S40099	Screw	ネジ	1	1	1	1	
20	102135A	Presser Foot Ass'y, left	押エ金 組 (左)	-	1	-	-	(21-23)
21	11/64S40073	Screw	ネジ	-	1	-	-	
22	3W5	Spring Washer	スプリングワッシャー	1	1	-	-	
23	11/64N40102	Nut	ナット	1	1	-	-	
24	11/64S40084	Screw for 102135A, 102162	ネジ	2	2	-	2	
25	102162	Presser Foot, right	押エ金 (右)	-	1	-	-	
26	102136A	Presser Foot Ass'y, left for sub-tape	押エ金 組 (左) 当紙用	-	(1)	-	-	(21-23)
27	102134A	Presser Foot Ass'y, left for hand feed	押エ金 組 (左) 手差用	-	(1)	-	-	(21-23)
28	102161	Presser Foot, right for hand feed	押エ金 (右) 手差用	-	(1)	-	-	
29	062251A	Presser Foot Ass'y, left	押エ金 組 (左)	1	-	-	-	(30)
30	11/64S40064	Screw	ネジ	1	-	-	-	
31	062261	Presser Foot, right	押エ金 (右)	1	-	-	-	
32	062252A	Presser Foot Ass'y, left for jute bag	押エ金 組 (左) 麻袋用	(1)	-	-	-	(30)
33	302221	Presser Bar Right Lifting Bracket	押エ棒抱キ (右)	-	-	1	-	(7)
34	302201	Presser Bar Left	押エ棒 (左)	-	-	1	-	
35	302211	Presser Bar Right	押エ棒 (右)	-	-	1	-	
36	302161A	Presser Foot Ass'y	押エ金 組	-	-	1	-	(37)
37	11/64S40018	Screw for 302161A	ネジ	-	-	1	-	
38	302191	Bag Guide	袋ガイド	-	-	1	-	
39	11/64S40045	Screw for 302181	ネジ	-	-	2	-	
40	11/64W10101	Washer for 302181	ワッシャー	-	-	2	-	
41	102321A	Presser Foot Ass'y, left for bag mouth folder	押エ金 組 (左) 口折り機用	-	(1)	-	-	(21-23)
42	102261	Presser Foot, right	押エ金 (右)	-	-	-	1	
43	102281A	Presser Foot Ass'y, left	押エ金 組 (左)	-	-	-	-	(21-23)
44	102311A	Presser Foot Ass'y, left for jute bag	押エ金 組 (左) 麻袋用	-	-	-	(1)	(21-23)
45	102331A	Presser Foot Ass'y, left for mouth folder	押エ金 組 (左) 口折り機用	-	-	-	-	(1)
46	062381	Presser Foot, right	押エ金 (右)	-	-	-	1	
47	062391A	Presser Foot Ass'y, left	押エ金 組 (左)	-	-	-	1	(21-23)
48	062392A	Presser Foot Ass'y, left for jute bag	押エ金 組 (左) 麻袋用	-	-	-	(1)	(21-23)
49	302231	Presser Bar Lifter	押エ揚ゲ	-	-	1	-	

06. LOOPER ROCKER & CONNECTING ROD PARTS

ルーパー揺動関係



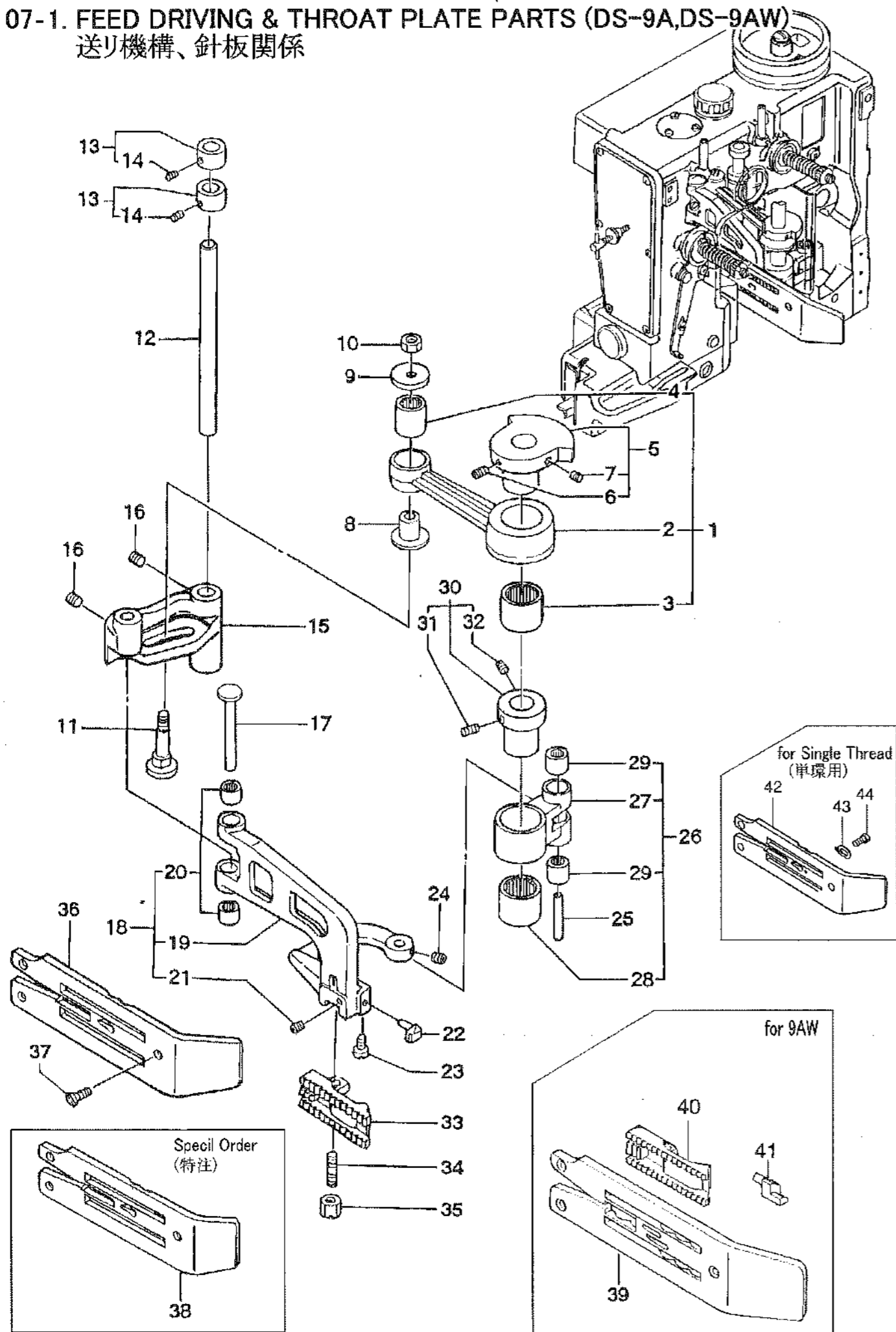
06. LOOPER ROCKER & CONNECTING ROD PARTS

ルーパー揺動関係

図番 Ref.No.	部品番号 Part No.	部品名称 Description	個数 Q'ty					摘要 Remarks
			A	C	P	AW	CW	
1	033022A	Looper Bell Crank Connection Rod Ass'y	1	1	1	1	1	(2-5)
2	9/64S40061	Screw	2	2	2	2	2	
3	11/64S40090	Screw	2	2	2	2	2	
4	1/4S40010	Screw	1	1	1	1	1	
5	1/4N40207	Nut	1	1	1	1	1	
6	303011	Looper Drive Lever Rocker	1	1	1	1	1	(7,8)
7	4B6×12	Screw for 303011	1	1	1	1	1	
8	1S6×8T	Screw for 303011	1	1	1	1	1	
9	1S5×6	Screw for 033022A	2	2	2	2	2	
10	303051	Thrust Collar	1	1	1	1	1	
11	304061	Set Collar	-	1	1	-	1	(12)
12	1S6×8	Screw for 304061	-	2	2	-	2	
13	303021	Looper Drive Lever Shaft	1	1	1	1	1	
14	303061	Looper Drive Lever	1	1	1	1	1	(15)
15	4B6×15	Screw for 303061	2	2	2	2	2	
16	033072	Looper Thread Take-Up	1	1	1	-	-	
17	11/64S40009	Screw for 033072	1	1	1	1	1	
18	063072AA	Looper Connecting Rod Ball Joint, right	1	1	1	1	1	
19	9/32W10106	Washer	2	2	2	2	2	
20	9/32N28210	Nut	1	1	1	1	1	
21	1/4N32201L	Nut	1	1	1	1	1	
22	303181	Looper Connecting Rod	1	1	1	1	1	
23	1/4N32201	Nut	1	1	1	1	1	
24	063092AA	Looper Connecting Rod Ball Joint, left	1	1	1	1	1	
25	11/64S40005	Screw for 063092AA	1	1	1	1	1	
26	303171	Looper Rocker	1	1	1	-	-	
27	033121	Looper	1	1	1	2	2	
28	11/64S40003	Screw for 033121	2	2	2	-	-	
29	1A01020	Ball Bearing (W687 ZZA)	2	2	2	2	2	
30	303161	Looper Rocker Cone Stud	1	1	1	1	1	
31	6N1/4	Nut	2	2	2	2	2	
32	303151	Looper Rocker Frame	1	1	1	1	1	
33	1S5×8T	Screw for 303151	1	1	1	1	1	
34	1S5×6	Screw for 303151	1	1	1	1	1	
35	103021	Looper Retainer	1	1	1	-	-	(36)
36	11/64S40018	Screw for 103021	1	1	1	-	-	
37	303141	Set Collar	1	1	1	1	1	(38)
38	1S6×6	Screw for 303141	2	2	2	2	2	
39	303091	Looper Rocker Shaft Arm	1	1	1	1	1	
40	4B5×12	Screw for 303091	1	1	1	1	1	
41	303131	Looper Rocker Shaft	1	1	1	1	1	
42	303101	Link Pin	1	1	1	1	1	
43	11/64S40005	Screw for 303101	2	2	2	2	2	
44	303082A	Bearing Case Ass'y	1	1	1	1	1	(45-47)
45	303082	Bearing Case	1	1	1	1	1	
46	3A03020	Bearing (SCE48P)	1	1	1	1	1	
47	3A03013	Bearing (HK22201L)	1	1	1	1	1	
48	303072	Looper Avoid Eccentric	1	1	1	1	1	(49,50)
49	1S6×10	Screw for 303072	1	1	1	1	1	
50	1S6×12	Screw for 303072	1	1	1	1	1	
51	306072	Knife Lever A	1	-	-	1	-	(52)
52	4B6×20	Screw for 306072	1	-	-	1	-	
53	303191	Looper for Single Thread	(1)	(1)	(1)	-	-	
54	033301	Looper Thread Take-Up	-	-	-	1	1	
55	303211	Looper Rocker	-	-	-	1	1	
56	9/64S40066	Screw	-	-	-	3	3	
57	9/64S40003	Screw	-	-	-	1	1	

07-1. FEED DRIVING & THROAT PLATE PARTS (DS-9A,DS-9AW)

送り機構、針板関係



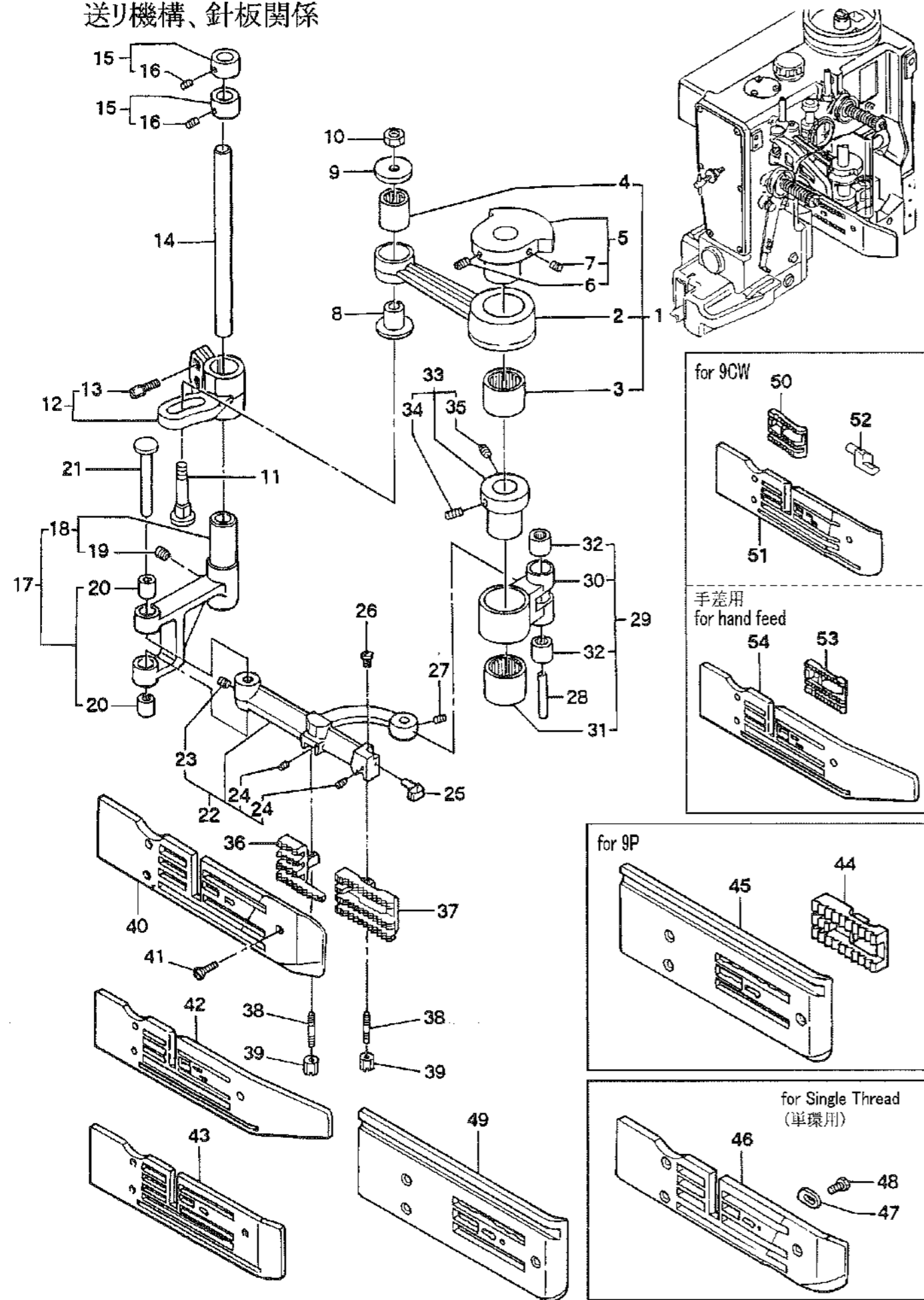
07-1. FEED DRIVING & THROAT PLATE PARTS (DS-9A,DS-9AW)

送り機構、針板関係

図番 Ref.No.	部品番号 Part No.	部品名称 Description	個数 Q'ty		摘要 Remarks
			9A	9AW	
1	304021A	Feed Drive Eccentric Ass'y	1	1	(2-4)
2	304021	Feed Rocker Eccentric Connection	1	1	
3	3A03013	Needle Bearing (HK2220LL)	1	1	
4	3A03018	Needle Bearing (HK1216LL)	1	1	
5	304011	Feed Rocker Eccentric	1	1	(6,7)
6	1S6×12	Screw for 304011	1	1	
7	1S6×10	Screw for 304011	1	1	
8	304041	Bushing	1	1	
9	304271	Washer	1	1	
10	9/32N28211	Nut	1	1	
11	304031	Feed Regulating Stud	1	1	
12	304051	Feed Rocker Shaft	1	1	
13	304061	Set Collar	2	2	(14)
14	1S6×8	Screw for 304061	4	4	
15	304201	Feed Rocker	1	1	(16)
16	1S6×6	Screw for 304201	3	3	
17	304261	Feed Bar Shaft	1	1	
18	304191A	Feed Bar Ass'y	1	1	(19-21)
19	304191	Feed Bar	1	1	
20	3A03020	Needle Bearing (SCE48P)	2	2	
21	9/64S40502	Screw	1	1	
22	104033	Needle Guide	1	-	
23	11/64S40002	Screw for 104033	1	1	
24	1S5×5	Screw for 304091	1	1	
25	304091	Feed Crank Link Pin	1	1	
26	304082A	Feed Crank Link Ass'y	1	1	(27-29)
27	304082	Feed Crank Link	1	1	
28	3A03019	Needle Bearing (HK2020LL)	1	1	
29	3A03020	Needle Bearing (SCE48P)	2	2	
30	304101	Feed Lift Eccentric	1	1	(31,32)
31	1S6×10	Screw for 304101	1	1	
32	1S6×6	Screw for 304101	1	1	
33	304211	Feed Dog	1	-	
34	11/64S40505	Screw for 304211	1	1	
35	11/64N40204	Nut for 304211	1	1	
36	304181	Throat Plate	1	-	
37	11/64S40074	Screw for 304181	3	3	
38	304182	Throat Plate	(1)	-	Special Order (特注)
39	304281	Throat Plate	-	1	
40	304291	Feed Dog	-	1	
41	304301	Needle Guide	-	1	
42	304311	Throat Plate for Single Thread	(1)	-	Special Order (特注)
43	114131	Throat Plate Thread Retainer	(1)	-	
44	3/32S56004	Screw for 114131	(1)	-	

07-2. FEED DRIVING & THROAT PLATE PARTS (DS-9C,DS-9P,DS-9CW)

送り機構、針板関係



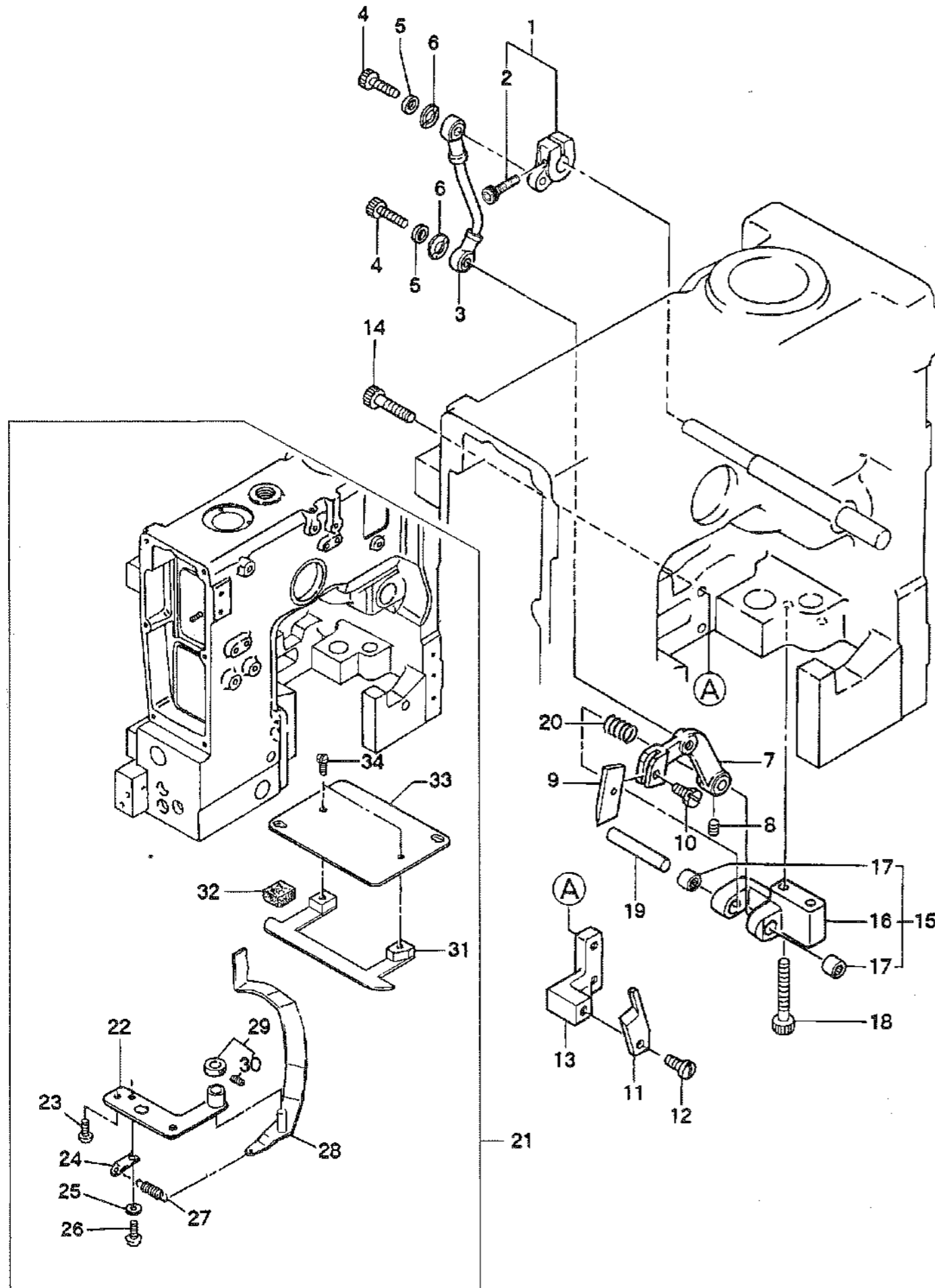
07-2. FEED DRIVING & THROAT PLATE PARTS (DS-9C,DS-9P,DS-9CW)

送り機構、針板関係

図番 Ref.No.	部品番号 Part No.	部品名称 Description	個数 Q'ty			摘要 Remarks
			9C	9P	9CW	
1	304021A	Feed Drive Eccentric Ass'y	1	1	1	(2-4)
2	304021	Feed Rocker Eccentric Connection	1	1	1	
3	3A03013	Needle Bearing (HK2220LL)	1	1	1	
4	3A03018	Needle Bearing (HK1216LL)	1	1	1	
5	304011	Feed Rocker Eccentric	1	1	1	(6,7)
6	1S6×12	Screw for 304011	1	1	1	
7	1S6×10	Screw for 304011	1	1	1	
8	304041	Bushing	1	1	1	
9	304271	Washer	1	1	1	
10	9/32N28211	Nut	1	1	1	
11	304031	Feed Regulating Stud	1	1	1	
12	064051	Feed Rocker Crank	1	1	1	(13)
13	15/64S28019	Screw for 064051	2	2	1	
14	304051	Feed Rocker Shaft	1	1	1	
15	304061	Set Collar	2	2	2	(16)
16	1S6×8	Screw for 304061	4	4	4	
17	304112A	Feed Rocker Ass'y	1	1	1	(18-20)
18	304112	Feed Rocker	1	1	1	(19)
19	1S6×6	Screw for 304112	1	1	1	
20	3A03020	Needle Bearing (SCE48P)	2	2	2	
21	304251	Feed Bar Shaft	1	1	1	
22	304071	Feed Bar	1	1	1	(23,24)
23	1S6×6	Screw for 304071	1	1	1	
24	9/64S40502	Screw	2	2	2	
25	304121	Needle Guide	1	1	-	
26	11/64S40005	Screw for 304121	1	1	1	
27	1S5×5	Screw for 304091	1	1	1	
28	304091	Feed Crank Link Pin	1	1	1	
29	304082A	Feed Crank Link Ass'y	1	1	1	(30-32)
30	304082	Feed Crank Link	1	1	1	
31	3A03019	Needle Bearing (HK2020LL)	1	1	1	
32	3A03020	Needle Bearing (SCE48P)	2	2	2	
33	304101	Feed Lift Eccentric	1	1	1	(34-35)
34	1S6×10	Screw for 304101	1	1	1	
35	1S6×6	Screw for 304101	1	1	1	
36	104072	Feed Dog, rear	1	-	1	
37	304131	Feed Dog, front	1	-	-	
38	11/64S40505	Screw for 104072, 304131	2	2	2	
39	11/64N40204	Nut for 104072, 304131	2	2	2	
40	104123	Throat Plate for automatic feed	1	-	-	
41	11/64S40074	Screw for 104123, 104093, 1040122	3	3	3	
42	104093	Throat Plate for Hand Feed	(1)	-	-	
43	104122	Throat Plate for automatic feed by lever start	(1)	-	-	
44	304221	Feed Dog	-	1	-	
45	304231	Throat Plate	-	1	-	
46	304171	Throat Plate for Single Thread	(1)	-	-	
47	114131	Throat Plate Thread Retainer	(1)	(1)	-	Special Order (特注)
48	3/32S56004	Screw for 114131	(1)	(1)	-	
49	304241	Throat Plate for Single Thread	-	(1)	-	
50	104231	Feed Dog, front	-	-	1	
51	104241	Throat Plate	-	-	1	
52	304301	Needle Guide	-	-	1	
53	104232	Feed Dog, front for Hand Feed	-	-	(1)	Special Order (特注)
54	104242	Throat Plate for Hand Feed	-	-	(1)	

08-1. CUTTER PARTS (DS-9A,DS-9AW)

カッター関係



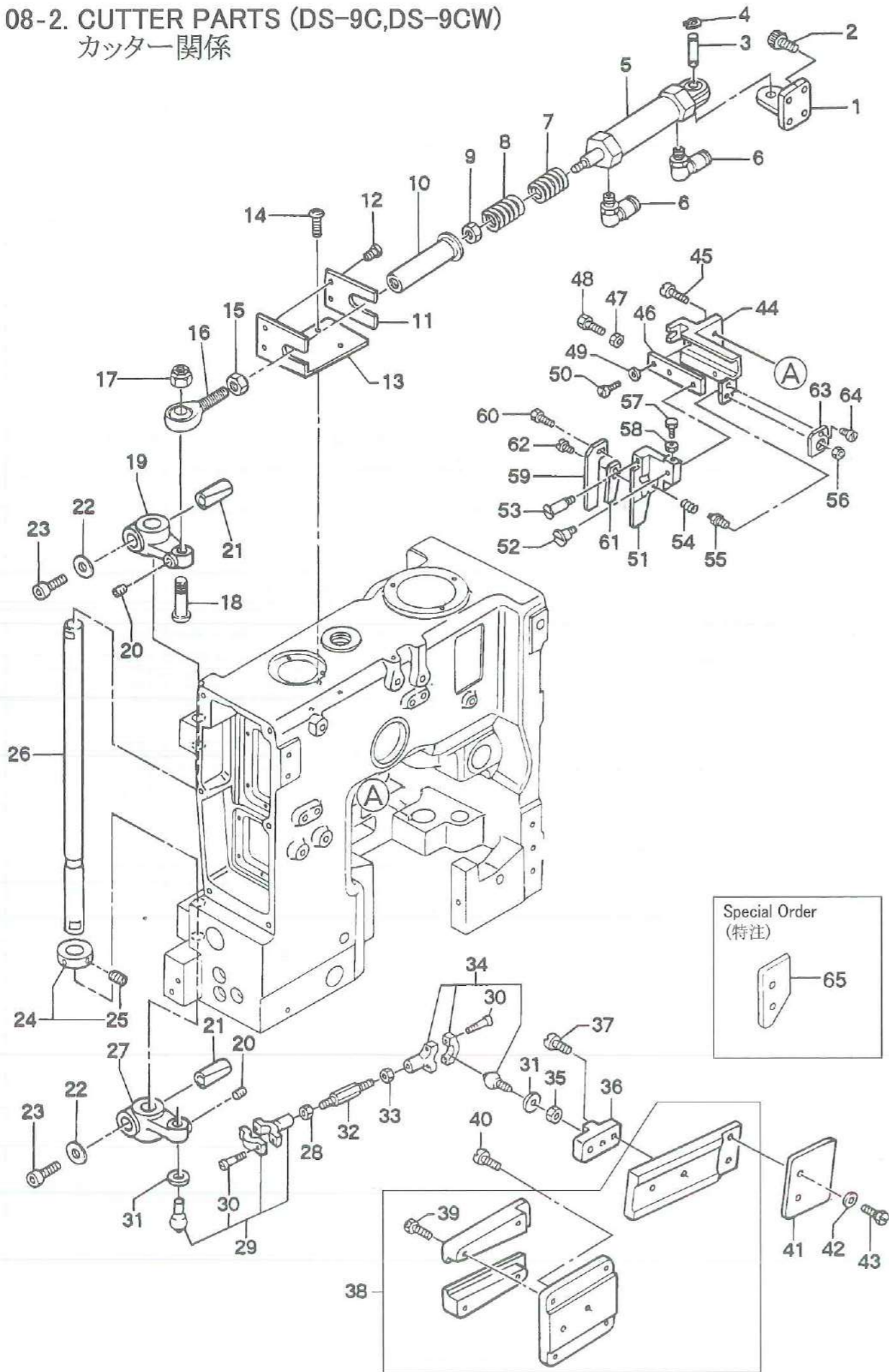
08-1. CUTTER PARTS (DS-9A,DS-9AW)

カッター関係

図番 Ref.No.	部品番号 Part No.	部品名称 Description	個数 Q'ty		摘要 Remarks
			9AW	9CW	
1	306072	Knife Lever A	1	1	(2)
2	4B6×20	Screw for 306072	1	1	
3	306081	Ball Joint Rod	1	1	
4	4B5×20	Screw for 306081	2	2	
5	P4031	Washer	2	2	
6	5/16W05201	Spring Washer	2	2	
7	306091	Knife Lever B	1	1	(8)
8	15/64S28525	Screw	1	1	
9	066143	Knife B	1	1	
10	11/64S40084	Screw for 066143	1	1	
11	066133	Knife A	1	1	
12	3/16S28028	Screw for 066133	1	1	
13	306131	Knife Base	1	1	
14	4B5×25	Screw for 306131	2	2	
15	306111A	Knife Lever Base Ass'y	1	1	(16,17)
16	306111	Knife Lever Base	1	1	
17	3A03020	Needle Bearing (SCE48P)	2	2	
18	4B5×40	Screw for 306111	2	2	
19	306101	Knife Lever Pin	1	1	
20	306121	Knife Lever Spring	1	1	
21	305301A	Thread Pusher Set	(1)	(1)	(22-34)
22	305301	Lever Base	(1)	(1)	
23	3S5×15	Screw for 305301	(2)	(2)	
24	285501	Spring Hook	(1)	(1)	Special Order (特注)
25	2W5	Washer	(1)	(1)	
26	4S5×5	Screw	(1)	(1)	
27	285491	Spring	(1)	(1)	
28	285461	Lever	(1)	(1)	
29	285471	Set Collar	(1)	(1)	(30)
30	SS1032316	Screw	(1)	(1)	
31	305311	Guide	(1)	(1)	
32	305331	Rubber	(1)	(1)	
33	305321	Face Plate, lower	(1)	(1)	
34	11/64S40005	Screw	(2)	(2)	

08-2. CUTTER PARTS (DS-9C,DS-9CW)

カッター関係



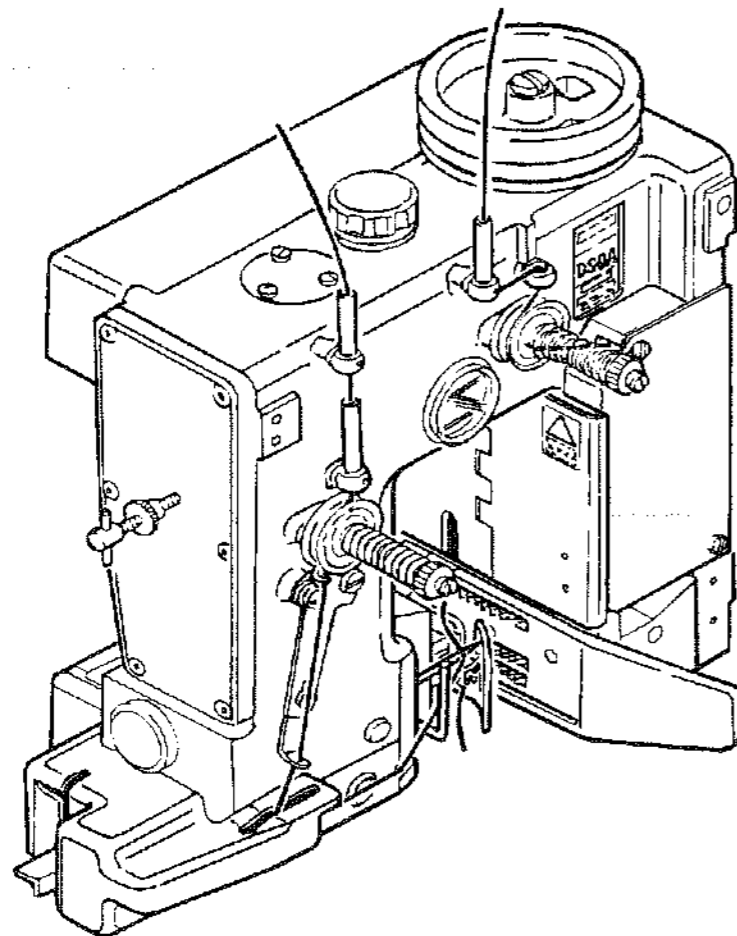
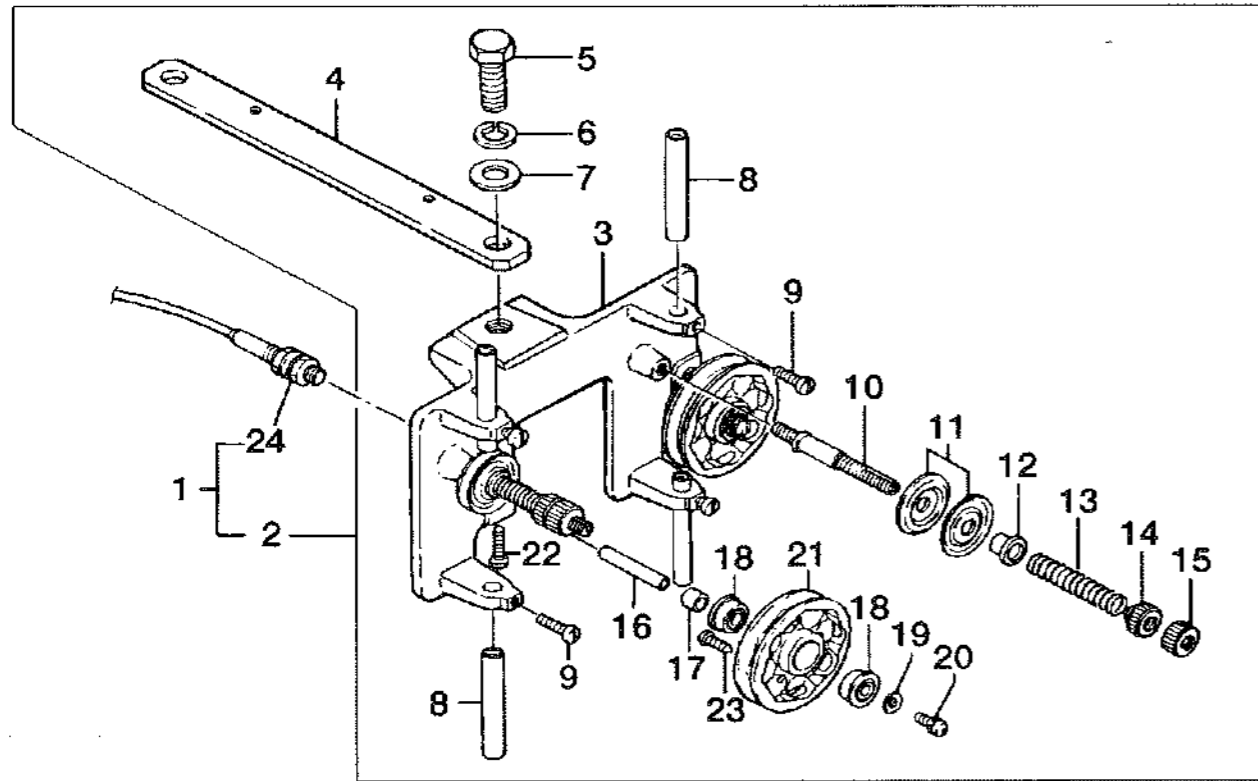
08-2. CUTTER PARTS (DS-9C,DS-9CW)

カッター関係

図番 Ref.No.	部品番号 Part No.	部品名称 Description	個数 Q'ty		摘要 Remarks
			9C	9CW	
1	306011	Air Cylinder Base	1	1	
2	4B5×15	Screw for 306011	4	4	
3	106201	Pin	1	1	
4	1RS-8	Stop Ring (S-8)	2	2	
5	J01002	Air Cylinder	1	1	
6	D07034	Tube Fitting, elbow (PL6-01M)	2	2	
7	305221	Spring	1	1	
8	286161	Spring	1	1	
9	1N8C	Nut	1	1	
10	306151	Joint Rod	1	1	
11	306061	Spacer	1	1	
12	11/64S40005	Screw for 306061	2	2	
13	306032	Joint Rod Guide	1	1	
14	4B5×15	Screw For 306032	2	2	
15	1N8	Nut (M8)	1	1	
16	6A04007	Rod End (POS-8)	1	1	
17	6N5/16	Nut	1	1	
18	306162	Cutter Connecting Lever Pin	1	1	
19	306182	Cutter Connecting Lever	1	1	
20	1S5×6	Screw	2	2	
21	306191	Cotter Pin	2	2	
22	15/64W20101	Washer	2	2	
23	4B6×15	Screw	2	2	
24	062052	Set Collar	1	1	(25)
25	15/64S28525	Screw	2	2	
26	306171	Cutter Rocker Shaft	1	1	
27	306181	Cutter Connecting Lever	1	1	
28	1/4N32201	Nut	1	1	
29	063092A	Ball Joint Ass'y, left	1	1	(30)
30	9/64S40061	Screw for 063092A, 063072A	3	3	
31	9/32W10106	Washer	2	2	
32	106141	Cutter Connecting Rod	1	1	
33	1/4N32201L	Nut	1	1	
34	063072A	Ball Joint Ass'y, right	1	1	(30)
35	9/32N28210	Nut	1	1	
36	306041	Ball Holder	1	1	
37	15/64S28004	Screw for 306041	2	2	
38	106032C	Oscillating Plate Ass'y	1	1	(39)
39	11/64S40061	Screw	4	4	
40	11/64S40006	Screw for 106032C	2	2	
41	106053	Upper Knife	1	1	
42	11/64W15103	Washer for 106053	2	2	
43	11/64S40049	Screw for 106053	2	2	
44	106062	Lower Knife Base Connection	1	1	
45	3/16S28018	Screw for 106062	2	2	
46	106152	Lower Knife Adjust Plate	1	1	
47	9/64N40101	Nut	1	1	
48	9/64S40067	Screw	1	1	
49	11/64W15103	Washer	1	1	
50	11/64S40075	Screw	1	1	
51	106072	Lower Knife Base	1	1	
52	11/64S40060	Screw	1	1	
53	11/64S40059	Screw	1	1	
54	106171	Spring	1	1	
55	106161	Spring Adjust	1	1	
56	11/64N40102	Nut for 106161	1	1	
57	9/64S40039	Screw	1	1	
58	9/64N40101	Nut	1	1	
59	106083	Lower Knife	1	1	
60	11/64S40093	Screw for 106083	1	1	
61	106093	Lower Knife Stopper	1	1	
62	9/64S40005	Screw for 106093	1	1	
63	306141	Plate	1	1	
64	11/64S40005	Screw	1	1	
65	306201	Upper Knife (Thread Cutter Only)	(1)	-	Special Order (特注)

09. THREAD BREAK DETECTOR PARTS

糸切れ検出関係



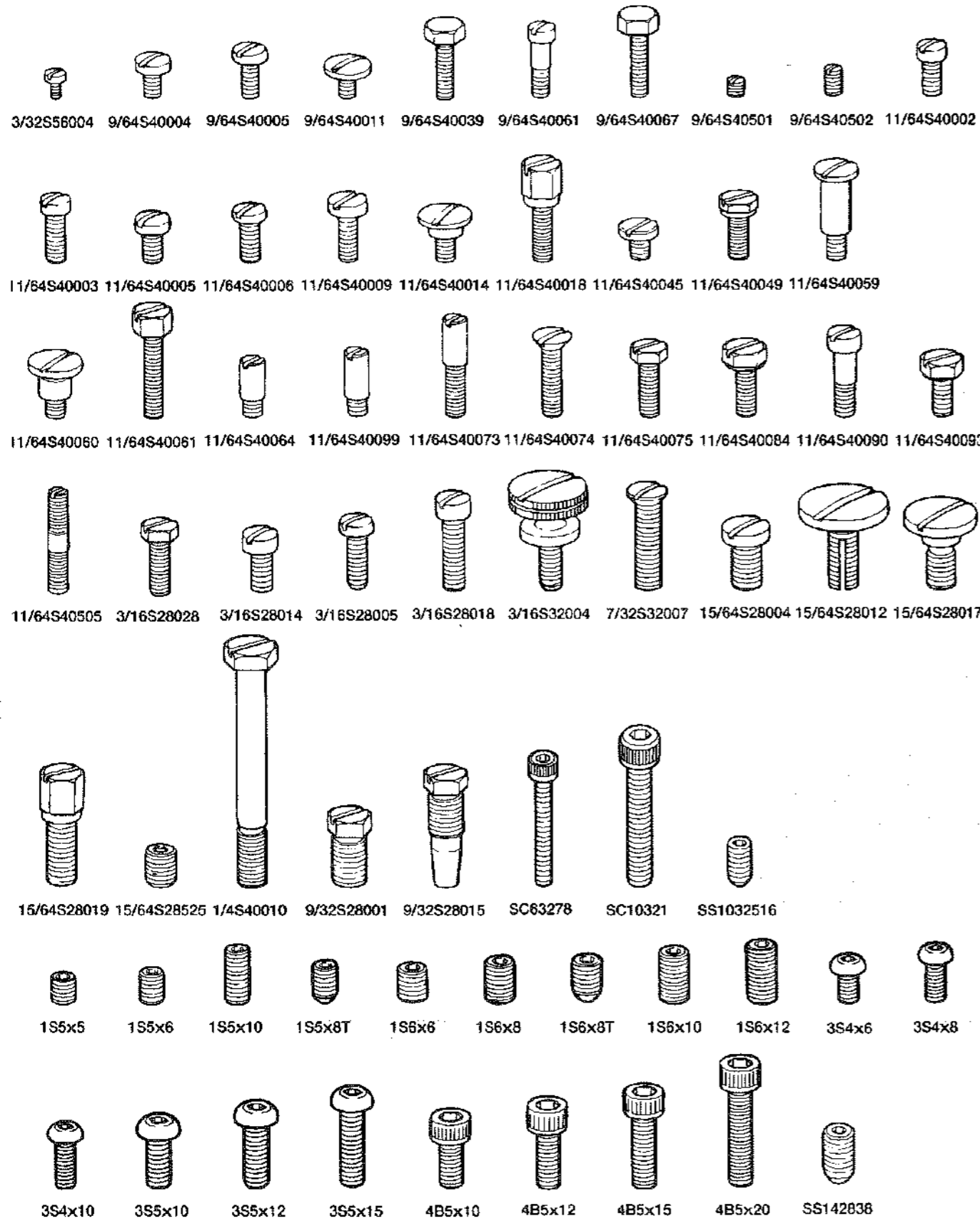
09. THREAD BREAK DETECTOR PARTS

糸切れ検出関係

図番 Ref.No.	部品番号 Part No.	部品名称 Description	個数 Q'ty		摘要 Remarks
			9A	9C	
1	255531BS	Thread Break Detector Ass'y	1	1	(2,24)
2	255531B	Thread Break Detector Ass'y	1	1	(3-23)
3	255531	Thread Break Detector Base	1	1	
4	255571	Stay	1	1	
5	1B10×15	Bolt	1	1	
6	3W10	Spring Washer	1	1	
7	2W10	Washer	1	1	
8	075091	Frame Thread Eyelet	4	4	
9	11/64S40003	Screw for 075091	4	4	
10	035021	Tension Post	2	2	
11	065261	Tension Disc	4	4	
12	035071	Tension Post Ferrule	2	2	
13	51292F-2	Tension Spring	2	2	
14	065171	Tension Nut	2	2	
15	245091	Tension Nut	2	2	
16	255551	Shaft	2	2	
17	255561	Collar	2	2	
18	1A01015	Bearing	4	4	
19	2W3	Washer	2	2	
20	4S3×8	Screw	2	2	
21	255541	Thread Break Detector Roller	2	2	
22	4S4×10	Screw	2	2	
23	9S2.6×8	Screw	12	12	
24	C02010	Switch (FL7M-P8A6)	2	2	

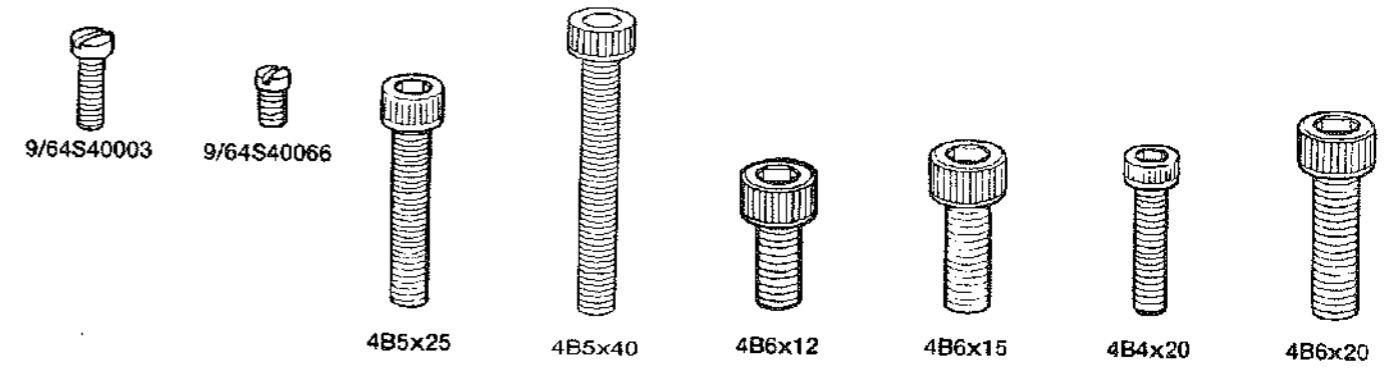
DS-9

SCREW (ネジ)



DS-9

SCREW (ネジ)



DS-9

NUT & WASHER (ナット、ワッシャー)



NUMERICAL INDEX OF PARTS

パーツ索引

PART NO.	PAGE	PART NO.	PAGE	PART NO.	PAGE	PART NO.	PAGE
015011	21-23	066143	35-9	255351	17-45	303051	29-10
031082	23-5	072121	27-11	255392	19-37	303061	29-14
031091	23-1	075081	19-8	255392A	19-36	303072	29-48
031111	23-4	075091	19-10,21-12	255531BS	39-1	303082	29-45
031131	25-6		39-8	255531B	39-2	303082A	29-44
032012A	25-13	092052	23-25	255531	39-3	303091	29-39
032141	25-27	092062	23-30	255541	39-21	303101	29-42
032171	25-24	102062	27-6	255551	39-16	303111	23-33
033022A	29-1	102091	27-3	255561	39-17	303112	23-39
033072	29-16	102101	27-4	255571	39-4	303121	23-35
033121	29-27	102134A	27-27	281122	25-35	303131	29-41
033301	29-54	102135A	27-20	282121	27-14	303141	29-37
035011	21-24	102136A	27-26	285461	35-28	303151	29-32
035021	21-18,39-10	102161	27-28	285471	35-29	303161	29-30
035021A	21-17	102162	27-25	285491	35-27	303171	29-26
035022	21-26	102171	27-1	285501	35-24	303181	29-22
035022A	21-25	102261	27-42	286161	37-8	303191	29-53
035031	19-13,21-29	102281A	27-43	301021	25-5	303211	29-55
035042	19-17	102311A	27-44	301031	23-20	304011	31-5,33-5
035043	21-33	102331A	27-45	301041	23-7	304021	31-2,33-2
035061	21-21	102321A	27-41	301051	25-2	304021A	31-1,33-1
035071	21-20,39-12	103021	29-35	301061A	25-32	304031	31-11,33-11
035191	17-17	104033	31-22	301081	25-33	304041	31-8,33-8
035201	17-18	104072	33-36	301091	23-38,25-38	304051	31-12,33-14
035821	19-28	104093	33-42	302011	25-20	304061	29-11,31-13 33-15
062052	25-11,37-24	104122	33-43	302021	25-26	304071	33-22
062151	25-22	104123	33-40	302032	23-28	304082	31-27,33-30
062181	27-8	104231	33-50	302041	23-14	304082A	31-26,33-29
062201	23-31	104241	33-51	302052	23-13	304091	31-25,33-28
062381	27-46	104232	33-53	302061	23-12	304101	31-30,33-33
062391A	27-47	104242	33-54	302072	25-8	304112	33-18
062392A	27-48	105017B	17-1	302082	25-9	304112A	33-17
062251A	27-29	105521	19-40,21-5	302091A	25-21	304121	33-25
062252A	27-32	105561	21-15	302101	25-29	304131	33-37
062261	27-31	106032C	37-38	302121	27-5	304171	33-46
063072A	37-34	106053	37-41	302161A	27-36	304181	31-36
063072AA	29-18	106062	37-44	302191	27-38	304182	31-38
063092A	37-29	106072	37-51	302201	27-34	304191	31-19
063092AA	29-24	106083	37-59	302211	27-35	304191A	31-18
064051	33-12	106093	37-61	302221	27-33	304201	31-15
065044	17-3	106141	37-32	302222	27-13	304211	31-33
065151	19-2	106152	37-46	302231	27-16	304221	33-44
065151E	19-1	106161	37-55	302251	25-43	304231	33-45
065171	19-6,21-22 39-14	106171	37-54	302251A	25-41	304241	33-49
		106201	37-3	302261	25-44	304251	33-21
065181	19-5	112061	23-23	302271	25-39	304261	31-17
065211	19-11,19-44	114131	31-43,33-47	303011	29-6	304271	31-9,33-9
065261	21-19,39-11	245071	19-7	303021	29-13	304281	31-39
065401	17-33,19-23	245091	39-15	303031	23-18	304291	31-40
066133	35-11	255262	19-21	303041	23-16	304301	31-41,33-52

NUMERICAL INDEX OF PARTS

パーツ索引

PART NO.	PAGE	PART NO.	PAGE	PART NO.	PAGE	PART NO.	PAGE
304311	31-42	306091	35-7	SCREW (ネジ・ボルト)	15/64S28012	25-1,25-12	
305012	17-20	306101	35-19		15/64S28017	17-52	
305021	17-12	306111	35-16	3/32S56004	31-44,33-48	15/64S28019	27-7,27-12
305031	17-5	306111A	35-15	9/64S40003	29-57		33-13
305042	17-28	306121	35-20	9/64S40004	17-11,17-14	15/64S28525	25-12,35-8 37-25
305052	17-27	306131	35-13	9/64S40005	19-41,21-6	1/4S40010	25-17,29-4
305062	17-37	306141	37-63		37-62	9/32S28001	25-16
305072	17-36	306151	37-10	9/64S40011	19-18,21-34	9/32S28015	25-15
305081	17-22	306162	37-18		27-18	1B10×15	39-5
305082	17-25	306171	37-26	9/64S40039	37-57	4B4×20	25-19
305091	17-23	306181	37-27	9/64S40061	29-2,37-30	4B5×10	17-9,25-30
305111	17-31	306182	37-19	9/64S40066	29-56		25-40
305122	17-8	306191	37-21	9/64S40067	37-48	4B5×12	29-40
305131	19-19,21-37	306201	37-65	9/64S40502	31-21,33-24	4B5×15	21-11,37-2
305141	17-16	HA1348	19-3	11/64S40001	25-42	4B5×20	17-21,25-34 35-4
305151	17-34	707181	23-37	11/64S40002	25-25,31-23	4B5×25	21-9,35-14
305152	17-39	80667	19-12	11/64S40003	29-28,39-9	4B5×40	35-18
305162	17-51	80676A	19-4	11/64S40005	17-4,17-15	4B6×12	29-7
305171	17-50	P4031	35-5		17-41,17-44	4B6×15	29-15,37-23
305181	27-9	51292F-2	39-13		21-36,29-25	4B6×20	29-52,35-2
					29-43,33-26		
305201	17-47				35-34,37-12	1S5×5	19-20,21-14
305211	17-46				37-64		21-16,21-38
305221	37-7			11/64S40006	37-40		31-24,33-27
305231	19-26			11/64S40009	19-16,21-32	1S5×6	19-33,25-28
305241	17-49				29-17		29-9,29-34 37-20
305242	17-55			11/64S40014	19-14,21-30	1S5×8T	29-33
305251	19-35			11/64S40018	27-37,29-36	1S5×10	27-15
305261	17-43			11/64S40045	27-39	1S6×6	29-38,31-16
305271	17-40			11/64S40049	37-43		31-32,33-19
305281	17-42			11/64S40059	37-53		33-23,33-35
305291	19-34			11/64S40060	37-52	1S6×8	29-12,31-14
305301	35-22			11/64S40061	37-39		33-16
305301A	35-21			11/64S40064	27-30	1S6×8T	29-8
305311	35-31			11/64S40073	27-21	1S6×10	25-3,29-49
305321	35-33			11/64S40074	31-37,33-41		31-7,31-31 33-7,33-34
305331	35-32			11/64S40075	37-50	1S6×12	29-50,31-6
305361	21-10			11/64S40084	27-24,35-10		33-6
305371	21-8			11/64S40090	25-14,29-3	3S4×6	19-27
305381	21-35			11/64S40093	37-60	3S4×8	17-35
305391	21-39			11/64S0099	27-19	3S4×10	19-22,21-40 27-10
305401	21-2			11/64S40501	19-9	3S5×10	17-32,37-14
305401A	21-1			11/64S40505	31-34,33-38	3S5×12	17-29
305431	21-27			3/16S28028	35-12	3S5×15	17-38,19-43
305441	21-13			3/16S28014	23-2		25-10,35-23
306011	37-1			3/16S28005	23-6	4S3×8	39-20
306032	37-13			3/16S28018	17-48,25-7	4S4×10	39-22
306041	37-36				37-45	4S5×5	35-26
306061	37-11			3/16S32004	17-54	9S2.6×8	39-23
306072	29-51,35-1			7/32S32007	17-2	10S4×12K	17-19,17-24
306081	35-3			15/64S28004	37-37	SC63278	17-26

NUMERICAL INDEX OF PARTS

パーツ索引

PART NO.	PAGE	PART NO.	PAGE	PART NO.	PAGE	PART NO.	PAGE
SC10321	25-37	WASHER (ワッシャー)		OTHER PARTS (其の他)			
SS1032316	35-30	11/64W10101	27-40	1A01002	23-3		
SS142838	25-36	11/64W15103	19-15,21-31 37-42,37-49	1A01004	23-8		
				1A01015	39-18		
NUT (ナット)		7/32W05201	27-17	1A01020	29-29		
		15/64W20101	37-22	3A03013	29-47,31-3		
9/64N40101	37-47,37-58	9/32W10106	29-19,37-31		33-3		
11/64N40102	27-23,37-56	5/16W05201	17-53,35-6	3A03014	23-32		
11/64N40104	21-28	2W3	39-19	3A03016	23-22		
11/64N40204	31-35,33-39	2W5	35-25	3A03018	31-4,33-4		
1/4N32201	29-23,37-28	2W10	39-7	3A03019	31-28,33-31		
1/4N32201L	29-21,37-33	3W5	27-22	3A03020	29-46,31-20		
1/4N40207	25-18,29-5	3W10	39-6		31-29,33-20		
9/32N28210	29-20,37-35				33-32,35-17		
9/32N28211	31-10,33-10			4A01001	23-11		
5/16N24301	27-2			4A01002	23-10		
1N8	37-15			6A04007	37-16		
1N8C	37-9			B20001	25-23,25-45		
6N1/4	29-31			B05001	25-31		
6N5/16	37-17			C02010	39-24		
				D03002	19-42,21-7		
				D04003	23-9		
				D04011	23-15,23-34		
				D04012	23-19		
				D04013	23-21		
				D04014	23-29		
				D04015	23-26		
				D04016	23-24		
				D05003	19-24		
				D05007	19-25		
				D07034	37-6		
				D07055	19-30		
				D07056	19-31		
				D07057	19-38,21-3		
				D09002	19-29		
				D09005	19-32		
				E07001	17-13		
				E07002	17-6		
				E07003	17-10		
				8FU2-4×130	19-39,21-4		
				11G1/8NPT	17-30		
				J01002	37-5		
				1K4×35S	25-4		
				31LP21	23-17,23-27		
				32LS14	23-36		
				1RS-8	17-7,37-4		