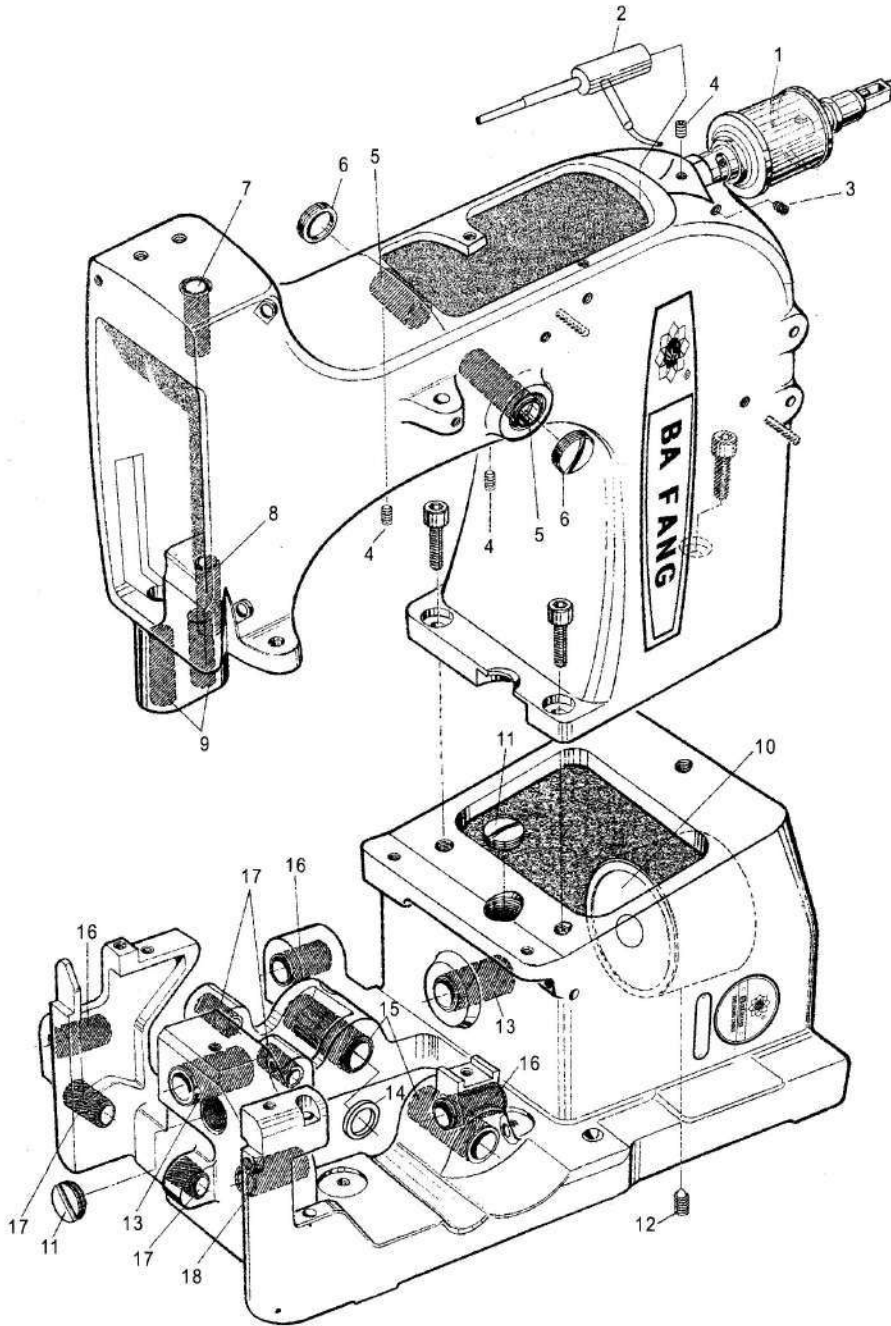


01 MACHINE BODY AND BUSHING PARTS

機體與軸套部件

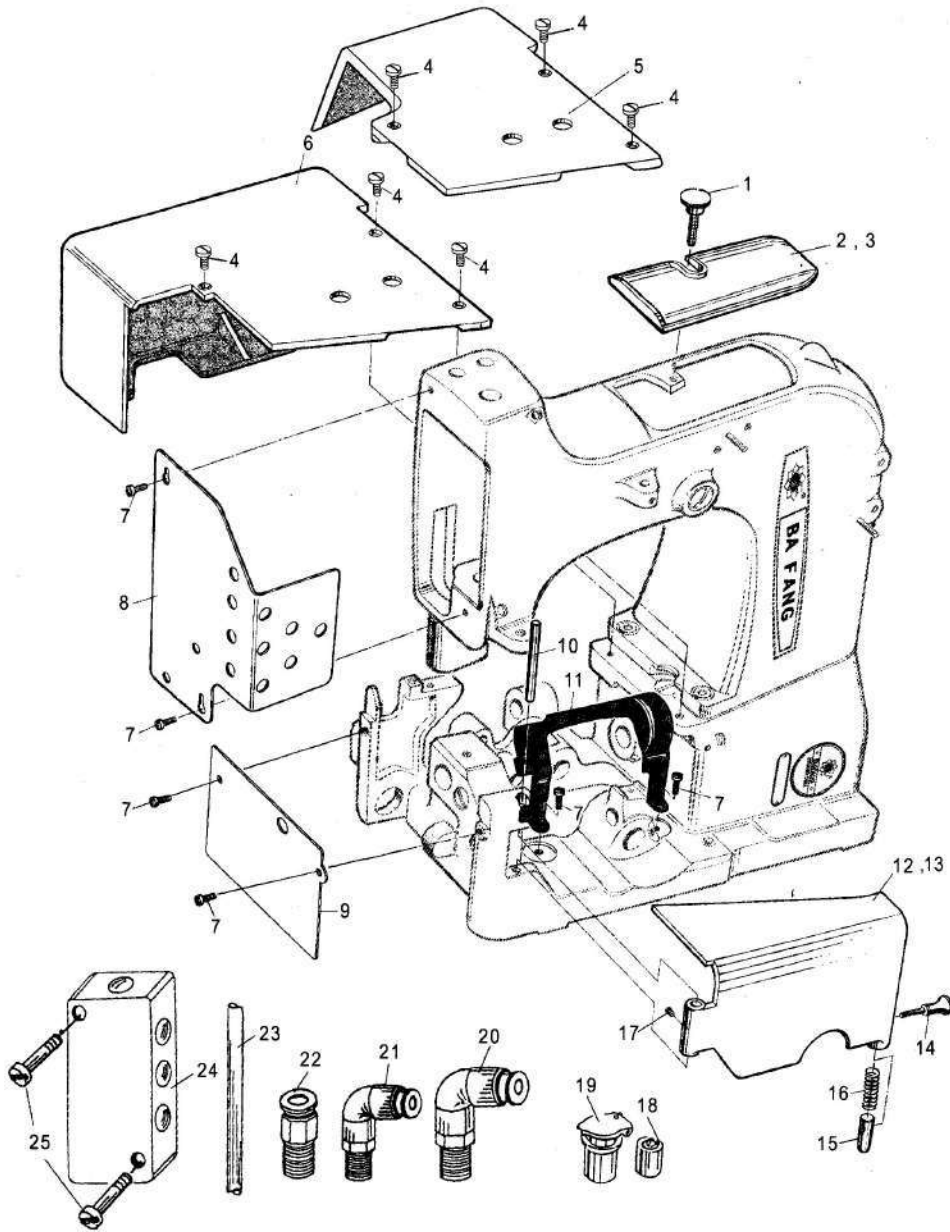


01 MACHINE BODY AND BUSHING PARTS

機體與軸套部件

序 號 Ref.No.	零 部 件 號 Part No.	零 部 件 名 稱 Description		數 量 Q'ty			備 注 Remarks
				-2C	-5	-6	
1	1001-5	Sight Feed Oiler	滴注式油杯M14×1.5	1	1	1	
2	3501001	Oil Cup Base	油杯座	1	1	1	
3	AD506N	Screw	內六角凹端螺釘M5×6	1	1	1	
4	AD508N	Screw	內六角凹端螺釘M5×8	3	3	3	
5	3501002	Bushing for Needle Lever Shaft	針杆杠杆軸套	2	2	2	
6	3501003	Plug Screw	杠杆軸悶頭	2	2	2	
7	3501004	Needle Bar Bushing , upper	針杆上軸套	1	1	1	
8	3501005	Needle Bar Bushing , lower	針杆下軸套	1	1	1	
9	3501006	Presser Bar Bushing	壓腳杆下軸套	2	2	2	
10	3501009	Crank Shaft Bearing Housing	悶頭	1	1	1	
11	3501010	Plug Screw	螺塞	2	2	2	
12	ZD825N	Screw	內六角錐端螺釘M8×25	1	1	1	
13	3501011	Crank Shaft Bushing	主軸軸套	2	2	2	
14	3501012	Washer	墊圈	1	1	1	
15	3501013	Looper Drive Lever Shaft Bushing	彎針軸軸套	2	2	2	
16	3501014	Feed Rocker Shaft Bushing	軸套	3	3	3	
17	3501015	Knife Lever Shaft Bushing	軸套	2	2	2	
18	3501016	Looper Shaft Bushing , front	軸套	1	1	1	

02.MISCELLANEOUS COVER PARTS
罩殼部件

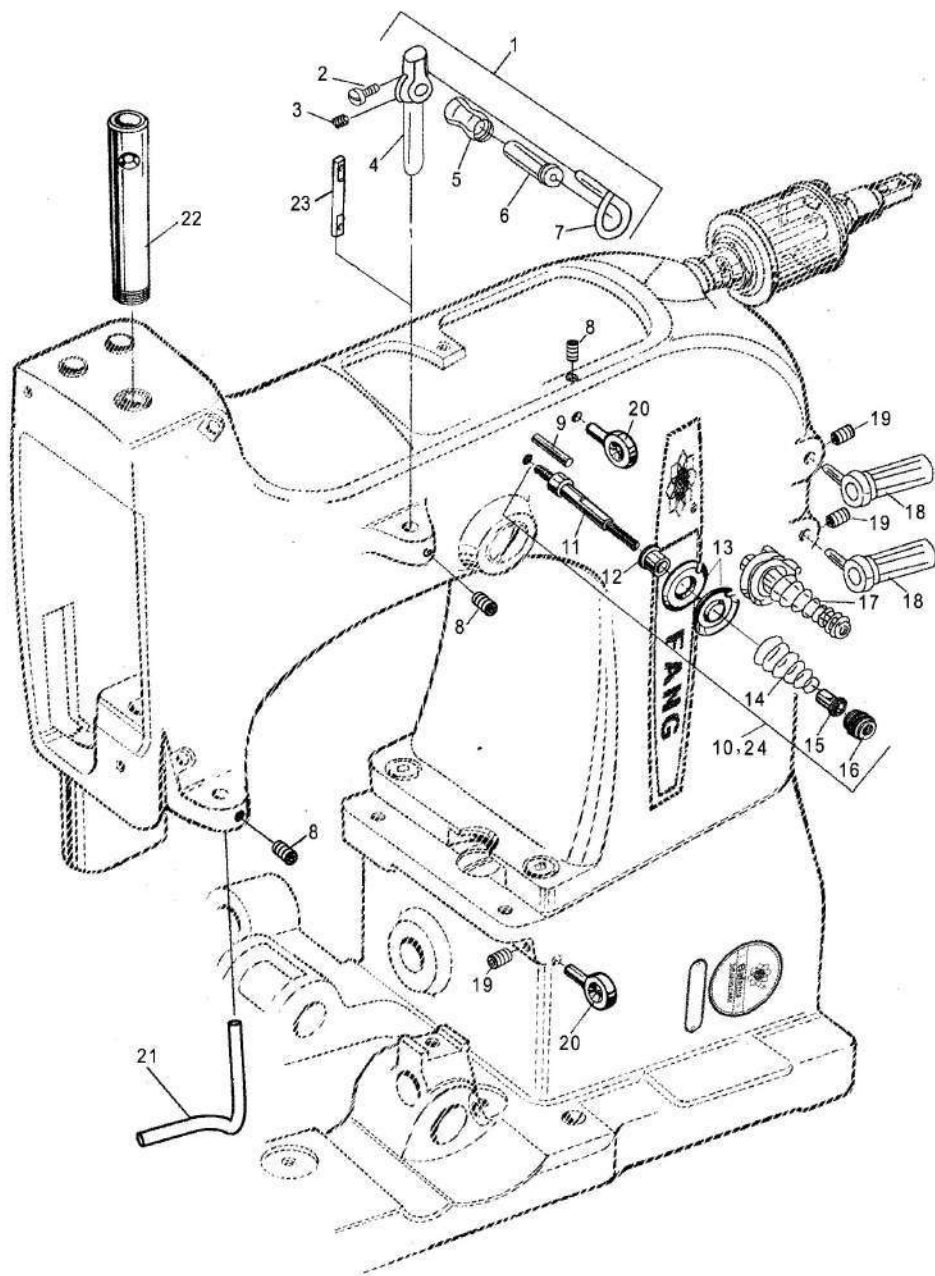


02.MISCELLANEOUS COVER PARTS

罩殼部件

序號 Ref.No.	零部件件號 Part No.	零部件名稱 Description	數量Q'ty			備注 Remarks
			-2C	-5	-6	
1	3502017	Screw	1	1	1	
2	3502018	Arm Cover	1	-	-	
3	3502018R	Arm Cover	-	1	1	
4	YT515	Screw	3	3	3	
5	3502019	Cloth Plate	1	-	-	
6	3502020R	Cloth Plate	-	1	1	
7	YT508D	Screw	6	6	6	
8	3502021	Face Cover	1	1	1	
9	3502022	End Cover	1	1	1	
10	3502024	Hinge Pin	1	1	1	
11	3502025	Guard	1	1	1	
12	3502026	Hinge Cover	1	-	-	
13	3502026R	Hinge Cover	-	1	1	
14	3502027	Locking Bolt Knob	1	1	1	
15	3502028	Locking Bolt	1	1	1	
16	3502029	Spring	1	1	1	
17	AD505N	Screw	1	1	1	
18	1001-1	Pinball Oil Cup	1	4	4	
19	1001-3	Spring Cover Oil Cup	4	4	4	
20	1001-4R	Oil Pipe Bend	-	1	1	
21	1001-5R	Oil Pipe Bend	-	4	4	
22	1001-6R	Oil Pipe Joint	-	4	4	
23	1001-8R	Oil Pipe	-	4	4	
24	3510195R	Oil Distributor	-	1	1	
25	YT420	Screw	-	2	2	

03.MISCELLANEOUS THREAD GUIDE AND THREAD TENSION PARTS 過綫與綫張緊部件

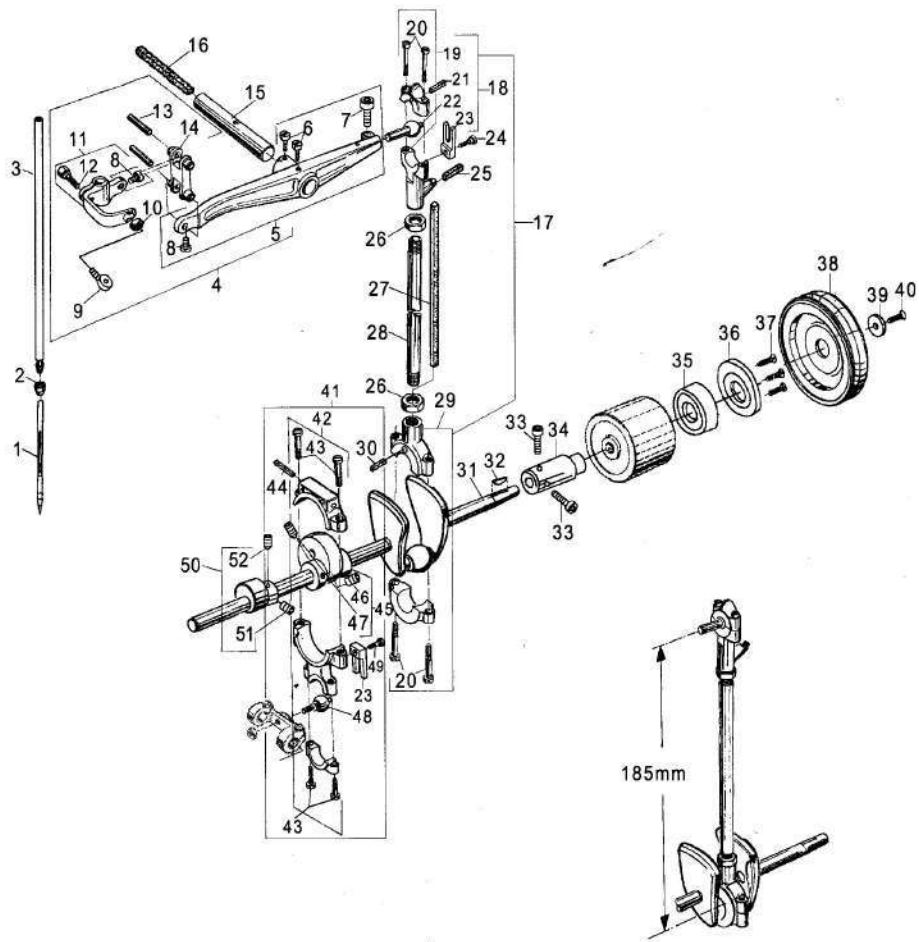


03.MISCELLANEOUS THREAD GUIDE AND THREAD TENSION PARTS 過綫與綫張緊部件

序號 Ref.No.	零部件件號 Part No.	零部件名稱 Description		數量Q'ty			備注 Remarks
				-2C	-5	-6	
1	350301	Needle Thread Guide	綫量調節杆組件	-	1	1	(2~7)
2	YT306	Screw	圓柱頭螺釘 M3×6	-	1	1	
3	AD404N	Screw	內六角凹端螺釘 M4×4	-	1	1	
4	3503030	Needle Thread Guide Bar	綫量調節杆	-	1	1	
5	3503031	Thread Take-up Roller	過綫滾輪	-	1	1	
6	3503032	Oil Cup	壓注油杯	-	1	1	
7	3503033	Thread Guide Finger	擋綫架	-	1	1	
8	AD505N	Screw	內六角凹端螺釘 M5×5	3	3	3	
9	3503034	Pin	銷	2	2	2	
10	350302	Thread Tension Ass'y	夾綫器組件	1	1	1	(11~16)
11	3503035	Tension Post	夾綫螺柱	2	2	2	
12	3503036	Tension Post Ferrule	夾綫板滾柱	2	2	2	
13	3503037	Tension Disc	夾綫板	4	4	4	
14	3503038	Spring	壓簧 $\phi 1.2$	1	1	1	
15	3503039	Tension Spring Ferrule	壓簧壓套	2	2	2	
16	3503040	Tension Nut	調節螺母	2	2	2	
17	3503041	Spring	壓簧 $\phi 1$	1	1	1	
18	350303	Thread Guide Ass'y	導綫柱組件	2	2	2	
19	AD508N	Screw	內六角凹端螺釘 M5×8	3	3	3	
20	3503043	Thread Guide	過綫柱	2	2	2	
21	3511200	Needle Thread Guide	擋綫杆	1	1	1	
22	3503044	Needle Bar Guide	針杆护套	1	1	1	
23	2002036	Thread Guide	導綫柱	1	-	-	
24	350302X	Thread Tension Ass'y	夾綫器組件	1	1	1	(11~13, 15~17)

04. CRANK SHAFT PARTS

主軸驅動部件



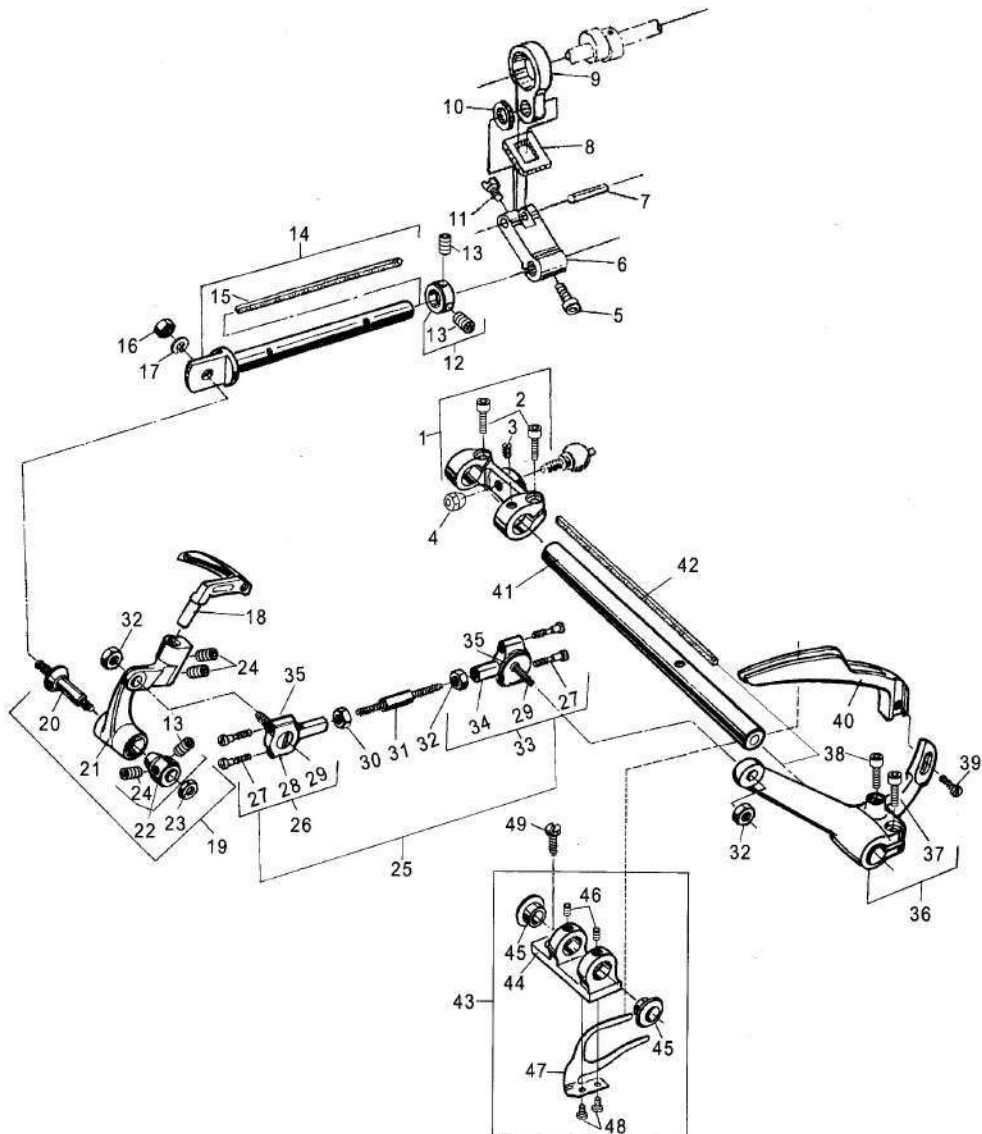
04. CRANK SHAFT PARTS

主軸驅動部件

序號 Ref.No.	零部件件號 Part No.	零部件名稱 Description		數量Q'ty			備注 Remarks
				-2C-	-5-	-6	
1	3504045	Needle	机针	1	1	1	
2	3504046	Needle Clamp Nut	针杆螺母	1	1	1	
3	3504047	Needle Bar	针杆	1	1	1	
4	350404	Needle Lever Ass'y	针杆连轴节组件	1	1	1	(5~14)
5	3504048	Needle Lever	针杆杠杆	1	1	1	(6~8)
6	YT512	Screw	圆柱头螺钉M5×12	2	2	2	
7	NL614	Screw	内六角螺钉M6×14	1	1	1	
8	YT406	Screw	圆柱头螺钉M4×6	2	2	2	
9	3504049	Thread Guide	过线柱	1	1	1	
10	701	Nut	螺母M5	1	1	1	
11	3504050	Needle Bar Connection	针杆连轴节	1	1	1	(8,12)
12	3510192	Coupling Bolt	连轴节螺栓	1	1	1	
13	3504051	Needle Bar Link Pin	针杆小连杆销	2	2	2	
14	3504052	Connection Link	针杆小连杆	1	1	1	
15	3504053	Needle Lever Shaft	针杆杠杆轴	1	1	1	(16)
16	1004-5	Oil Wick	油绳	1	1	1	
17	350405	Needle Lever Ass'y	上下连杆组件	1	1	1	(18~30)
18	350406	Needle Lever Ball Link Ass'y	连杆上接头组件	1	1	1	(19~24)
19	3504054	Shell	连杆上接头	1	1	1	(20)
20	3504055	Screw	轴位螺钉	4	4	4	
21	1004-9	Oil Wick	油绳	1	1	1	
22	3504056	Ball Stud	上接头球头销	1	1	1	
23	3504057	Guide Fork	导向板	2	2	2	
24	YT412	Screw	圆柱头螺钉M4×12	1	1	1	
25	1004-8	Oil Wick	油绳	1	1	1	
26	708	Nut	螺母M10×1	2	2	2	
27	1004-1	Oil Wick	油绳	1	1	1	
28	3504058	Needle Lever Connection Rod	连杆接杆	1	1	1	
29	3504059	Shell	连杆下接头	1	1	1	(20)
30	1004-7	Oil Wick	油绳	1	1	1	
31	3504060	Crank Shaft	曲轴	1	1	1	
32	3504061	Woodruff Key	半圆键	1	1	1	
33	NL512	Screw	内六角螺钉M5×12	2	2	2	
34	3504062	Bearing Bushing	轴承衬套	1	1	1	
35	1005	Bearing	轴承6205	1	1	1	
36	3504063	Bearing Cap	轴承压盖	1	1	1	
37	YT408	Screw	圆柱头螺钉M4×8	3	3	3	
38	3504064	Pulley	带轮	1	1	1	
39	3504065	Washer	垫圈	1	1	1	
40	NL514	Screw	内六角螺钉M5×14	1	1	1	
41	350407	Looper Drive Eccentric Ass'y	弯针大连杆组件	1	1	1	(23,42~49)
42	3504066	Looper Connection Bar	弯针大连杆	1	1	1	(43)
43	3504067	Screw	轴位螺钉	4	4	4	
44	1004-6	Oil Wick	油绳	1	1	1	
45	3504068	Looper Eccentric	弯针大偏心	1	1	1	(46~47)
46	AD605N	Screw	内六角凹端螺钉M6×5	1	1	1	
47	ZD608N	Screw	内六角锥端螺钉M6×8	1	1	1	
48	3504070	Ball Stud	大连杆球轴承	1	1	1	
49	3510193	Guide Plate Bolt	导向板螺栓	1	1	1	
50	3504071	Looper AVOID Eccentric	弯针小偏心	1	1	1	(51~52)
51	AD604N	Screw	内六角凹端螺钉M6×4	1	1	1	
52	ZD606N	Screw	内六角锥端螺钉M6×6	1	1	1	

05. LOOPER DRIVE PARTS

彎針驅動部件

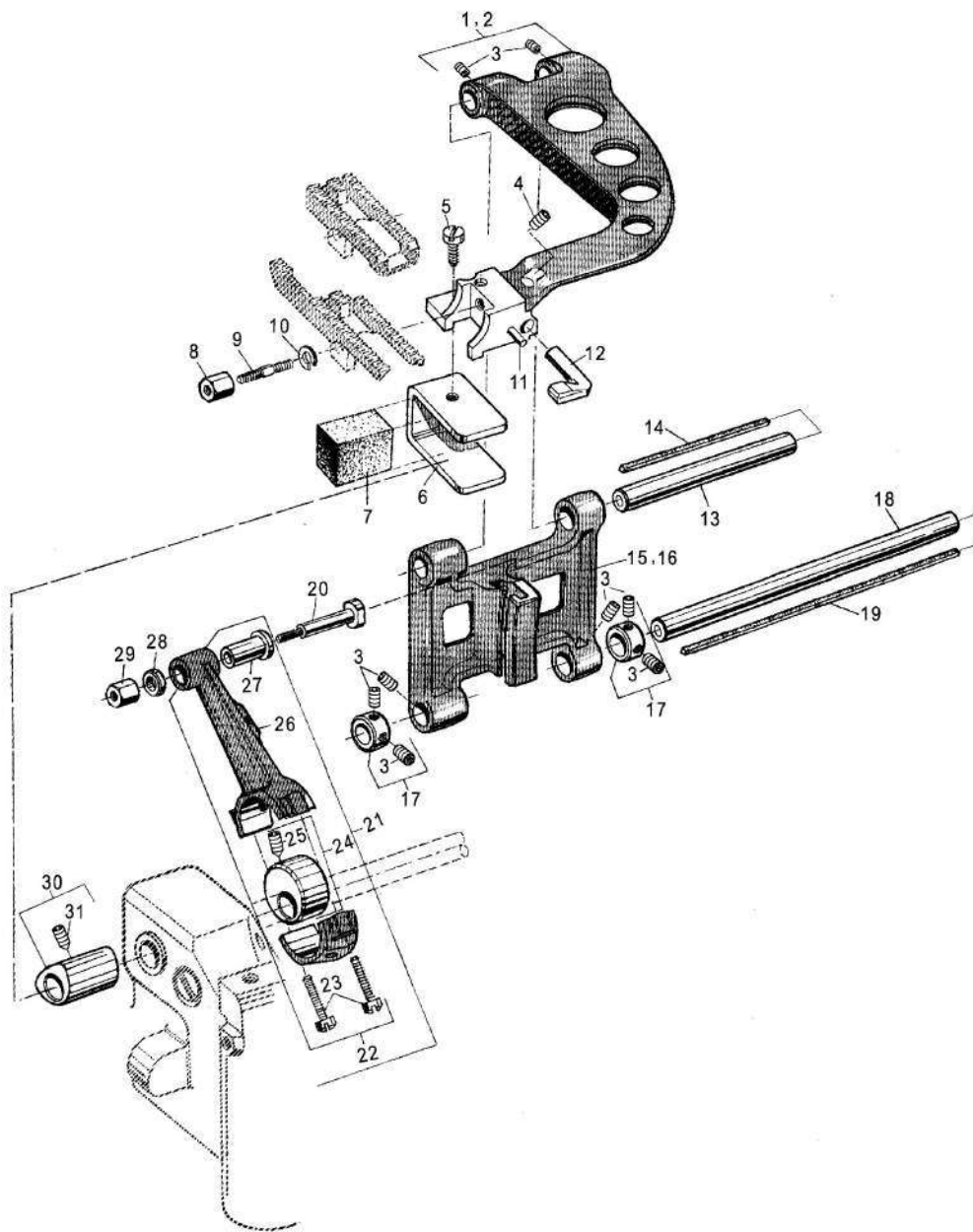


05. LOOPER DRIVE PARTS

彎針驅動部件

序號 Ref. No.	零零件件號 Part No.	零零件名稱 Description		數量 Q'ty			備註 Remarks
				-2C	-5	-6	
1	3505072	Rocker for Looper Drive Shaft	內插杆	1	1	1	(2,3)
2	NL514	Screw	內六角螺釘 M5×14	2	2	2	
3	ZD506	Screw	锥端螺釘 M5×6	1	1	1	
4	3505073	Nut	锥螺母	1	1	1	
5	NL614	Screw	內六角螺釘 M6×14	1	1	1	
6	3505074	Rocker for Looper Avoid Eccentric	弯針小偏心摇杆	1	1	1	
7	3505075	Connecting Rod Pin	连杆销	1	1	1	
8	3505076	Felt	毛毡	1	1	1	
9	3505077	Connecting Bar	弯針小偏心连杆	1	1	1	
10	3505078	Felt Washer	毛毡垫圈	1	1	1	
11	YT306	Screw	圓柱头螺釘 M3×6	1	1	1	
12	3505079	Collar	挡圈	1	1	1	(13)
13	AD504N	Screw	內六角凹端螺釘 M5×4	3	3	3	
14	3505080	Looper Rocker Shaft	弯針架轴	1	1	1	(15)
15	1004-4	Oil Wick	油绳	1	1	1	
16	707	Nut	螺母 M8×1	1	1	1	
17	904	Spring Washer	彈簧垫圈 8	1	1	1	
18	3505081	Looper for Two-thread	双線弯針	1	1	1	
19	350508	Looper Rocker Ass'y	弯針架組件	1	1	1	(13,20-24)
20	3505082	Cone Stud for Looper Rocker	弯針架锥轴	1	1	1	
21	3505083	Looper Rocker	弯針架	1	1	1	
22	3505084	Cone	锥形支承体	1	1	1	
23	704	Nut	螺母 M6×0.75×3	1	1	1	
24	AD505N	Set Screw	內六角凹端螺釘 M5×5	3	3	3	
25	350509	Ball Joint Ass'y	小连杆組件	1	1	1	(26-35)
26	350510	Ball Joint Ass'y, left	左小连杆組件	1	1	1	(27-29)
27	3505085	Screw	轴位螺釘	4	4	4	
28	3505086	Shell	左弯針小连杆	1	1	1	
29	3505087	Ball Stud	球接头	2	2	2	
30	703	Nut(left)	螺母 BM6 (左)	1	1	1	
31	3505088	Connecting Rod	小连杆接杆	1	1	1	
32	702	Nut	螺母 BM6	3	3	3	
33	350511	Ball Joint Ass'y, right	右小连杆組件	1	1	1	(27,29,34)
34	3505089	Shell	右弯針小连杆	1	1	1	
35	3505090	Felt Washer	毛毡垫圈	2	2	2	
36	3505092	Looper Drive Lever	弯針外面柄	1	1	1	(37-38)
37	NL512	Screw	內六角螺釘 M5×12	1	1	1	
38	NL516	Screw	內六角螺釘 M5×16	1	1	1	
39	YT410	Screw	圓柱头螺釘 M4×10	1	1	1	
40	3505093	Looper Thread Take-up	挑线动片	1	1	1	
41	3505094	Looper Drive Lever Rocker Shaft	弯針轴	1	1	1	
42	1004-2	Oil Wick	油绳	1	1	1	
43	350512	Looper Thread Cast-Off Ass'y	定片固定座組件	1	1	1	(44-48)
44	3505095	Bracket	弯針挑线座	1	1	1	
45	3505096	Thread Eyelet	挑线座衬圈	2	2	2	
46	AD404N	Screw	內六角凹端螺釘 M4×4	2	2	2	
47	3505097A	Cast-off Hook	挑线定片	1	1	1	
48	YT406	Screw	圓柱头螺釘 M4×6	2	2	2	
49	YT508D	Screw	圓柱头螺釘 M5×8	1	1	1	

06.FEED DRIVE PARTS
送料驅動部件

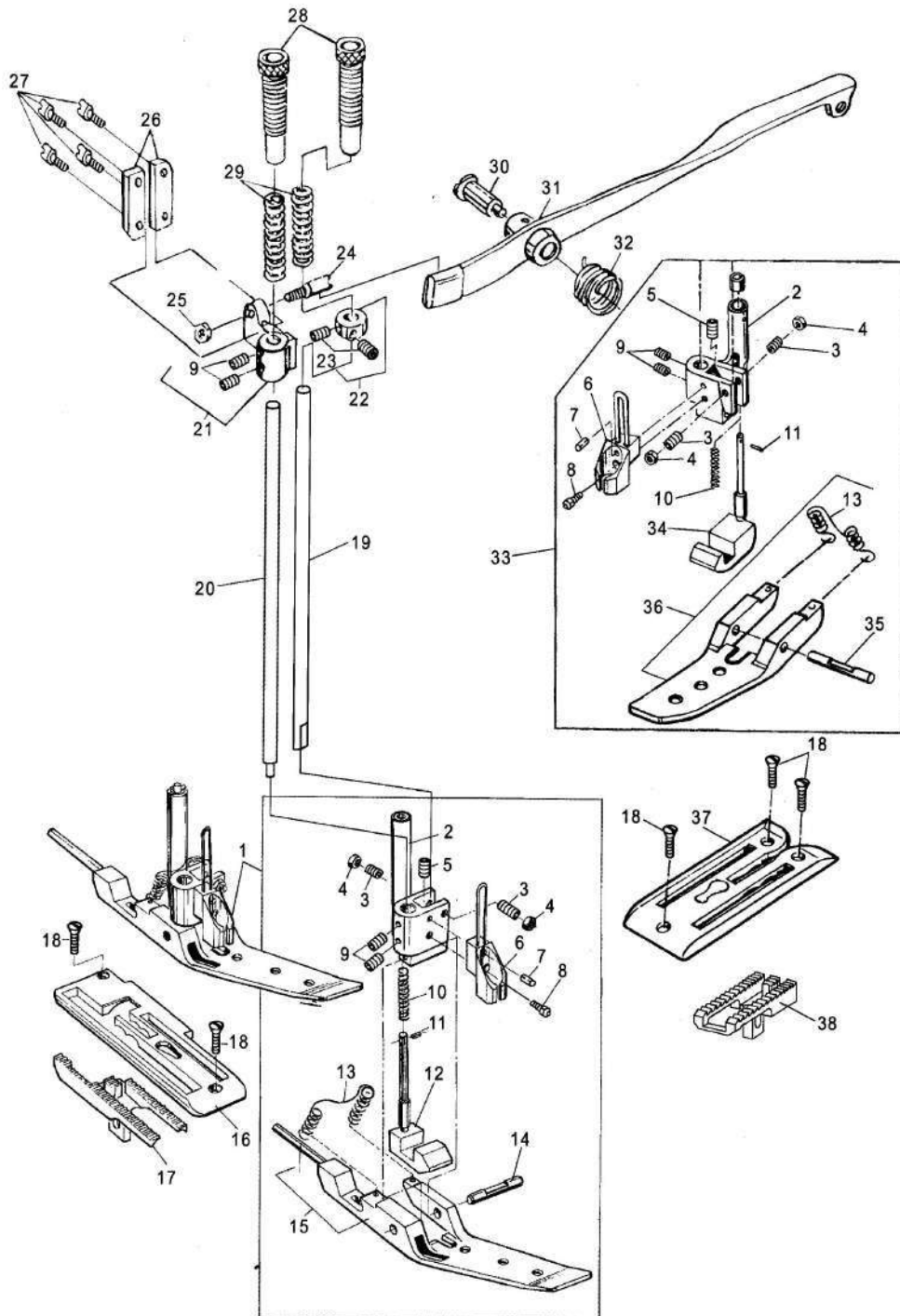


06.FEED DRIVE PARTS

送料驅動部件

序號 Ref.No.	零部件件號 Part No.	零部件名稱 Description		數量Qty			備注 Remarks
				-2C	-5	-6	
1	3506098	Feed Bar	牙架	1	-	-	(3)
2	3506098R	Feed Bar	牙架	-	1	1	(3)
3	AD504N	Screw	內六角凹端螺釘M5×4	8	8	8	
4	AD608N	Screw	內六角凹端螺釘M6×8	1	1	1	
5	YT408	Screw	圓柱頭螺釘M4×8	1	1	1	
6	3506099	Feed Lift Eccentric Fork	抬牙叉	1	1	1	
7	3506100	Oil Felt	毛毡	1	1	1	
8	709	Nut	厚螺母 M5	1	1	1	
9	3506101	Stud Bolt	螺栓	1	1	1	
10	902	Spring Washer	彈簧墊圈 5	1	1	1	
11	1006-2	Pin	圓柱銷Φ3×10	1	1	1	
12	3506102	Needle Guard	護針塊	1	1	1	
13	3506103	Feed Bar Shaft	牙架軸	1	1	1	
14	1004-5	Oil Wick	油繩	1	1	1	
15	3506104	Feed Rocker	牙架座	1	-	-	
16	3506104R	Feed Rocker	牙架座	-	1	1	
17	3505079	Collar	擋圈	2	2	2	(3)
18	3506105	Feed Rocker Shaft	送料軸	1	1	1	
19	1004-2	Oil Wick	油繩	1	1	1	
20	3506107	Stitch Regulating Stud	針距調節螺釘	1	1	1	
21	350612	Feed Drive Eccentric Ass'y	送料連杆組件	1	1	1	(22-27)
22	3506108	Connection	送料連杆	1	1	1	(23)
23	3504055	Screw	軸位螺釘	2	2	2	
24	3506110	Eccentric	送料偏心	1	1	1	(25)
25	ZD608X	Screw	錐端螺釘M6×0.75×7.5	1	1	1	
26	3510196	Oil Felt	毛毡	1	1	1	
27	3506111	Flange Bushing	連杆調節軸套	1	1	1	
28	3506112	Washer	墊圈 6	1	1	1	
29	706	Nut	厚螺母 M6	1	1	1	
30	3506113	Feed Lift Eccentric	抬牙凸輪	1	1	1	(31)
31	ZD607X	Screw	錐端螺釘M6×0.75×6.5	1	1	1	

07.FEED DOG, THROAT PLATE & PRESSER FOOT PARTS
送料牙、針板與壓腳部件

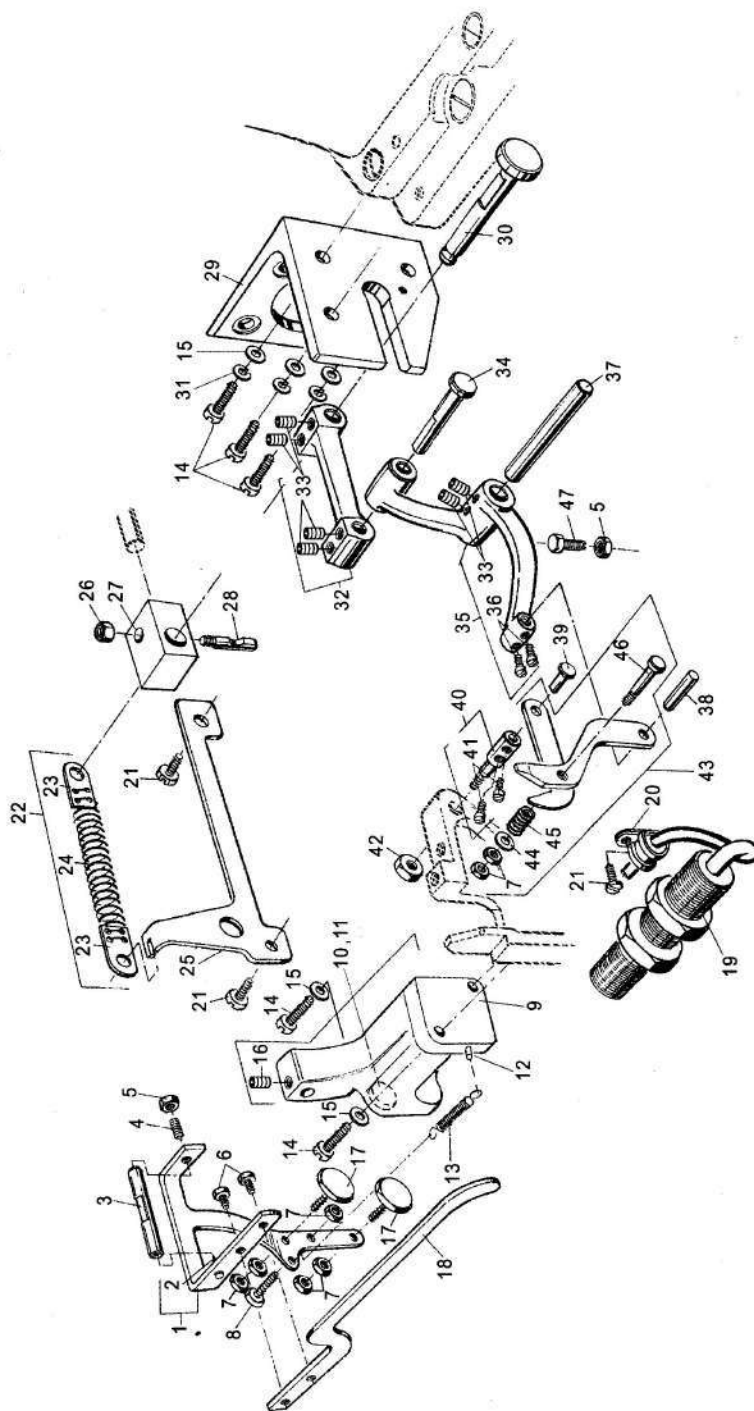


07.FEED DOG, THROAT PLATE & PRESSER FOOT PARTS

送料牙、針板與壓腳部件

序號 Ref.No.	零部件件號 Part No.	零部件名稱 Description		數量Q'ty			備注 Remarks
				-2C-	-5-	-6-	
1	350713R	Presser Foot Ass'y	壓腳組件	-	1	1	(2~15)
2	3507114	Presser Foot Shank	壓腳柄	1	1	1	(3~5, 9)
3	AD508N	Screw	內六角凹端螺釘M5×8	2	2	2	
4	701	Nut	螺母M5	2	2	2	
5	PD506	Set Screw	平端螺釘M5×6	1	1	1	
6	3507115	Finger Guard	壓腳護針罩	1	1	1	(7)
7	1006	Clamping Sleeve	圓柱銷Φ2×8	1	1	1	
8	NL408	Screw	內六角螺釘M4×8	1	1	1	
9	AD505N	Screw	內六角凹端螺釘M5×5	4	4	4	
10	3507116	Spring	小壓腳彈簧	1	1	1	
11	1007	Clamping Sleeve	開口銷Φ1.2	1	1	1	
12	3507117R	Chaining Section	小壓腳	-	1	1	
13	3507118	Spring	拉簧	1	1	1	
14	3507119R	Pin	銷	-	1	1	
15	3507120R	Presser Foot Bottom	壓腳底板	-	1	1	(13)
16	3507122R	Throat Plate	針板	-	1	1	
17	3507123R	Feed Dog	送料牙	-	1	1	
18	CT512	Screw	沉頭螺釘M5×12	3	2	2	
19	3507124	Presser Bar, right	右壓腳杆	1	1	1	
20	3507125	Presser Bar, left	壓腳杆	1	1	1	
21	3507126	Presser Foot Guide	壓杆導架	1	1	1	(9)
22	3505079	Collar	擋圈	1	1	1	(23)
23	AD504N	Screw	內六角凹端螺釘M5×4	2	2	2	
24	3507128	Lifting Screw	提升螺釘	1	1	1	
25	702	Nut	螺母BM6	1	1	1	
26	3507129	Guide Plate	導板	2	2	2	
27	YT508D	Screw	圓柱頭螺釘M5×8	4	4	4	
28	3507130	Spring Regulating Bushing	壓簧調節螺套	2	2	2	
29	3507131	Spring	壓腳杆壓簧	2	2	2	
30	3507132	Stud for Lifter Lever	抬壓腳螺釘	1	1	1	
31	3507133	Presser Foot Lifter Lever	抬壓腳扳手	1	1	1	
32	3507134	Spring	扭簧	1	1	1	
33	350714	Presser Foot Ass'y	壓腳組件	1	-	-	(2~11,13,34~36)
34	3507136	Chaining Section	小壓腳	1	-	-	
35	3507140	Pin	銷	1	-	-	
36	3507141	Presser Foot Bottom	壓腳底板	1	-	-	(13)
37	3507142	Throat Plate	針板	1	-	-	
38	3507143	Feed Dog	送料牙	1	-	-	

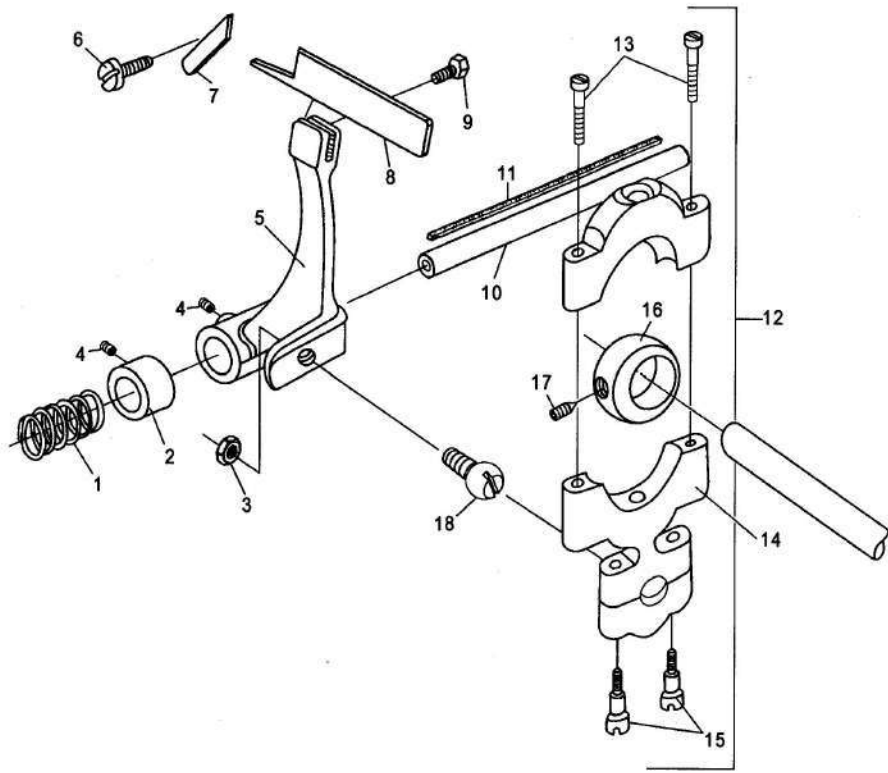
08.FEELER, PROXIMITY SWITCH & CUTTER PARTS (GK35-5&GK35-6)
啓動杆、接近開關與綫辦切刀部件 (GK35-5&GK35-6)



08.FEELER, PROXIMITY SWITCH & CUTTER PARTS (GK35-5&GK35-6)
啓動杆、接近開關與綫辦切刀部件 (GK35-5&GK35-6)

序號 Ref.No.	零件件號 Part No.	零件名稱 Description		數量Qty			備注 Remarks
				-2C	-5	-6	
1	3508144	Holder for Feeler	启动杆支架	-	1	1	(2)
2	3508145	Centre Pin	支架铰链顶尖	-	1	1	
3	3508146	Centre Shaft	铰链销	-	1	1	
4	3508147	Centre Screw	顶尖螺钉	-	1	1	
5	701B	Nut	螺母 M5	-	2	2	
6	YT506	Screw	圆柱头螺钉 M5×6	-	2	2	
7	710	Nut	螺母 M4	-	7	7	
8	LJ415	Screw	六角头螺钉 M4×15	-	1	1	
9	3508148	Support for Feeler	启动杆支架座	-	1	1	
10	3508149	Magnet	磁铁	-	1	1	
11	3508149R	Magnet Bushing	磁铁套	-	1	1	
12	3508150	Grooved Pin	拉簧勾销	-	1	1	
13	3508151	Spring	拉簧	-	1	1	
14	YT515	Screw	圆柱头螺钉 M5×15	-	5	5	
15	802	Washer	垫圈 5	-	5	5	
16	AD506N	Screw	内六角凹端螺钉 M5×6	-	1	1	
17	3508152	Screw	传感螺钉	-	2	2	
18	3508153	Feeler	启动杆	-	1	1	
19	2208	Proximity Switch	接近开关	-	1	1	
20	3508154	Cable Clamp	电缆夹	-	1	1	
21	YT508D	Screw	圆柱头螺钉 M5×8	-	3	3	
22	350815	Pull Back Spring Ass'y	拉簧组件	-	1	1	(23~24)
23	3508155	Spring Eyelet	拉簧孔板	-	2	2	
24	3508156	Spring	剪刀复位拉簧	-	1	1	
25	3508157	Spring Holder	复位拉簧座	-	1	1	
26	706	Nut	厚螺母 M6	-	1	1	
27	3508158	Clamp	驱动杆夹	-	1	1	
28	3508159	Locking Stud	锁紧螺栓	-	1	1	
29	3508160	Bracket	托架	-	1	1	
30	3508161	Stud	连杆滑销	-	1	1	
31	902	Spring Washer	弹簧垫圈 5	-	3	3	
32	3508162	Connecting Level	剪刀连杆	-	1	1	(33)
33	AD505N	Screw	内六角凹端螺钉 M5×5	-	6	6	
34	3508163	Stud	连杆销	-	1	1	
35	3508164	Lever	剪刀摇杆	-	1	1	(33,36)
36	YT406	Screw	圆柱头螺钉 M4×6	-	2	2	
37	3508165	Shaft	剪刀摇杆轴	-	1	1	
38	3508166	Parallel Pin	剪刀摇杆销	-	1	1	
39	3508167	Stud	剪刀连杆销	-	1	1	
40	3508168	Stud for Knife	剪刀铰链轴	-	1	1	(41)
41	YT405	Screw	圆柱头螺钉 M4×5	-	2	2	
42	702	Nut	螺母 M6	-	1	1	
43	350816	Chain Cutter Ass'y	剪刀组件	-	1	1	(7, 44~46)
44	801	Washer	垫圈 4	-	1	1	
45	3508169	Spring	剪刀弹簧	-	1	1	
46	3508170	Stud	剪刀铰链销	-	1	1	
47	LJ512	Screw	六角头螺钉 M5×12	-	1	1	

09.CUTTER PARTS (GK35-2C)
綾辯切刀部 (GK35-2C)

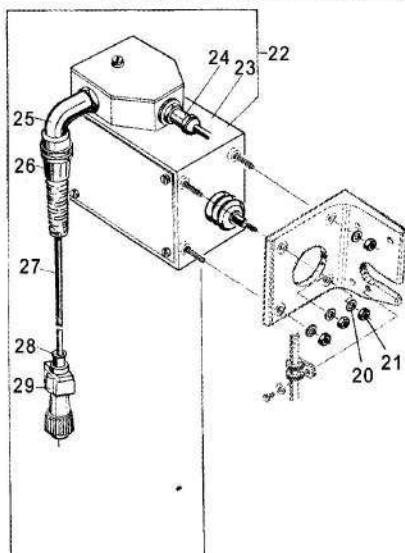
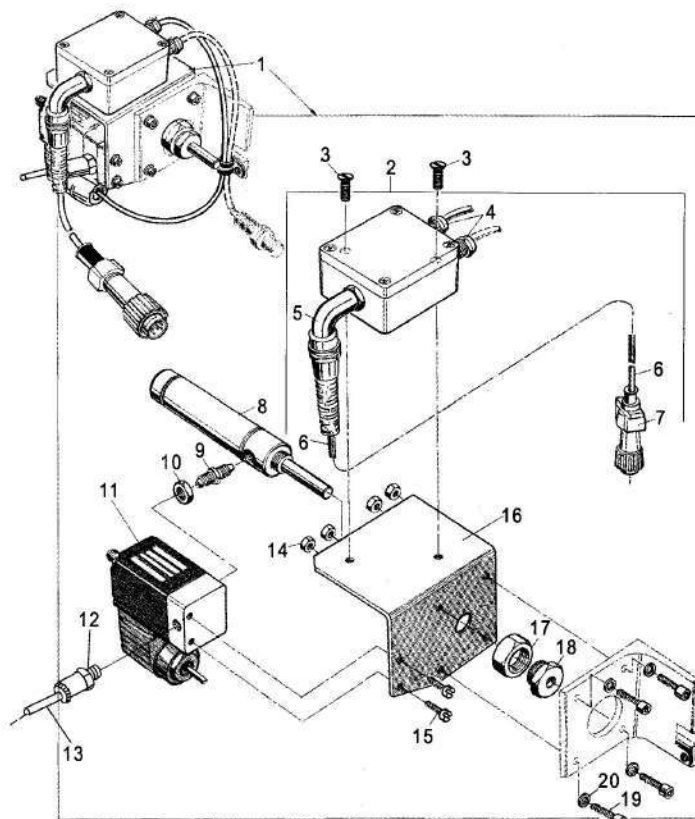


09.CUTTER PARTS (GK35-2C)
綫辮切刀部件 (GK35-2C)

序 號 Ref.No.	零 部 件 號 Part No.	零 部 件 名 稱 Description		數 量 Qty			備 注 Remarks
				-2C-	-5-	-6-	
1	3509172	Spring	彈 簧	1	-	-	
2	3509173	Collar	擋 圈	1	-	-	(4)
3	702	Nut	螺 母 BM6	1	-	-	
4	AD504N	Screw	內六角凹端螺釘 M5×4	2	-	-	
5	3509174	Holder for Cutter	剪 刀 架	1	-	-	
6	YT508D	Screw	圓柱頭螺釘 M5×8	1	-	-	
7	3509175	Knife	剪 刀 定 片	1	-	-	
8	3509176	Cutting Steel	剪 刀 動 片	1	-	-	
9	LJ405	Screw	六角頭螺釘 M4×5	1	-	-	
10	3509177	Shaft	剪 刀 架 軸	1	-	-	
11	1004-3	Oil Wick	油 繩	1	-	-	
12	350917	Connecting Bar Ass'y for Cutter	剪 刀 連 杆 組 件	1	-	-	(13~18)
13	3509178	Screw	軸 位 螺 釘	2	-	-	
14	3509179	Connecting Bar for Cutter	剪 刀 連 杆	1	-	-	
15	3505085	Screw	軸 位 螺 釘	2	-	-	
16	3509181	Eccentric for Cutter	剪 刀 偏 心	1	-	-	
17	ZD508N	Screw	內六角錐端螺釘 M5×8	1	-	-	
18	3509182	Bearing	球 軸 承	1	-	-	

10.SOLENOID & AIR CYLINDER DRIVE CUTTER PARTS (GK35-5&-6)

電動、氣動切刀部件 (GK35-5和GK35-6)



Receptacle in Switch-box (Top View)
開關箱插座 (頂視圖)



10.SOLENOID & AIR CYLINDER DRIVE CUTTER PARTS (GK35-5&-6)

電動、氣動切刀部件 (GK35-5和GK35-6)

序號 Ref.No.	零部件件號 Part No.	零部件名稱 Description		數量Qty			備注 Remarks
				-2C-	-5-	-6-	
1	351018	Air Cylinder Driver Ass'y	气动元件组件	-	-	1	(2~20)
2	351019	Terminal Box	接线盒组件	-	-	1	(4~7)
3	CT410	Screw	沉头螺钉M4×10	-	-	2	
4	2201	Cable Screw-fitting	电缆接头PG7	-	-	2	
5	2202	Cable Screw-fitting	电缆接头PG9	-	-	1	
6	2204	Supply Cable	电缆	-	-	1	
7	2205	Plug Housing	插头	-	-	1	
8	2101	Air Cylinder	气缸	-	-	1	
9	3510184	Connector	气缸接头	-	-	1	
10	3510185	Nut	螺母	-	-	1	
11	2102	Solenoid Valve	电磁阀	-	-	1	
12	1001-7R	Connector	气管接头Φ6	-	-	1	
13	1001-9R	Tube	气管Φ6	-	-	1	
14	705	Nut	螺母M5	-	-	4	
15	YT408	Screw	圆柱头螺钉M4×8	-	-	2	
16	3510188	Bracket	托架	-	-	1	
17	3510189	Lock Nut	锁紧螺母	-	-	1	
18	3510190	Stop Screw	气缸调节螺套	-	-	1	
19	NL514	Screw	内六角螺钉M5×14	-	-	4	
20	802	Washer	垫圈 5	-	-	4	
21	701	Nut	螺母M5	-	-	4	
22	2207	Solenoid Drive Ass'y	电磁铁组件	-	-	1	(23~29)
23	2207-1	AC-Solenoid	牵引电磁铁	-	-	1	
24	2207-2	Cable Screwing	接头	-	-	1	
25	2207-3	Elbow Screw-fitting	弯头	-	-	1	
26	2207-4	Cable Screwing	弯头接管	-	-	1	
27	2207-5	Cable	电缆	-	-	1	
28	2207-6	Cable Sleeve	密封橡皮圈	-	-	1	
29	2207-7	Plug Housing	插头	-	-	1	